

# TRI MO TRIMOTERM



ARCHITECTURAL DETAILS  
FIRE-RESISTANT  
INTERNAL WALL SYSTEM  
TRIMOTERM FTV



**HORIZONTAL  
INSTALLATION**

**TRIMOTERM  
FTV**

**FUNCTION**

- FIRE - fire-resistant system
- FOOGIENE - food & hygiene system
- BASE - backing-wall system

**APPLICATION**

- External Facade
- Internal Wall
- Flat Roof
- + External Soffit
- + Internal Ceiling
- Pitched Roof

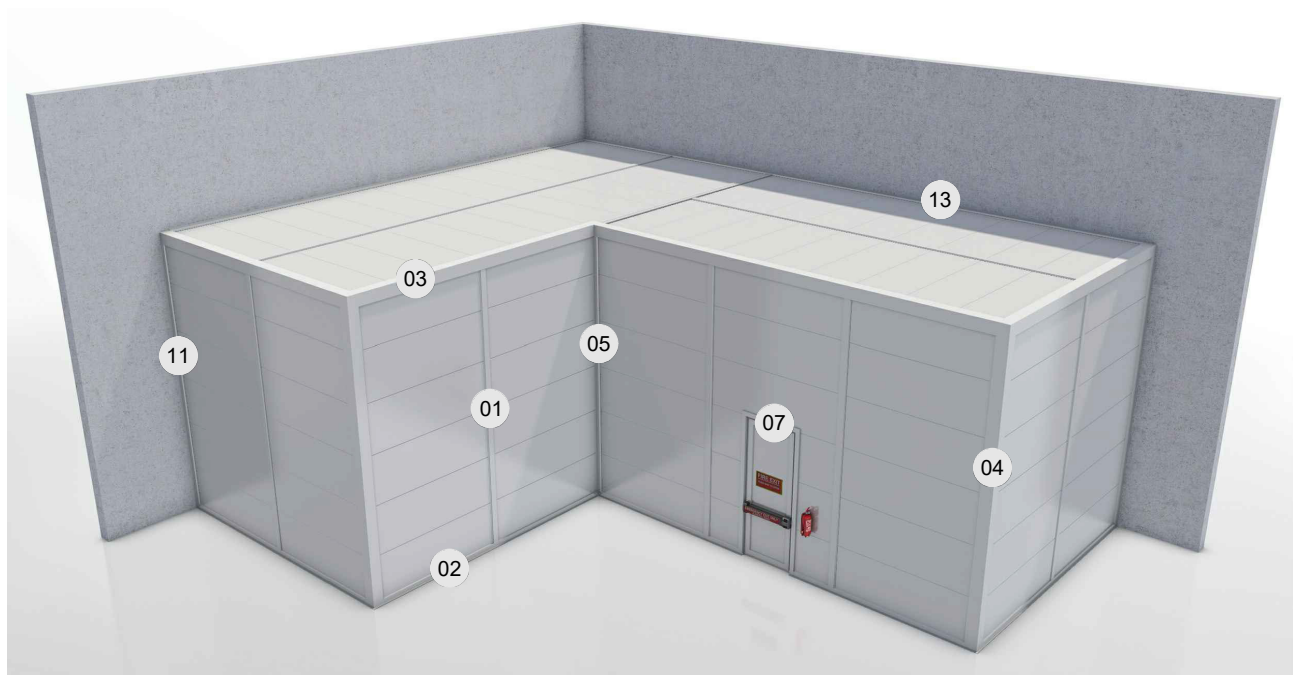


CAD download centre



BIM download centre

- TE-H-01 JOINT
- TE-H-02 BASE
- TE-H-03 PARAPET
- TE-H-04 EXTERNAL CORNER
- TE-H-05 INTERNAL CORNER
- TE-H-07 DOOR
- TE-H-11 OTHER SYSTEM CONNECTION
- TE-H-13 CEILING



**SCHEME**

Trimo Group holds full copyrights on the information and details provided on this media, therefore any unauthorized reproduction and distribution is strictly prohibited.



## HORIZONTAL INSTALLATION

# TRIMOTERM FTV

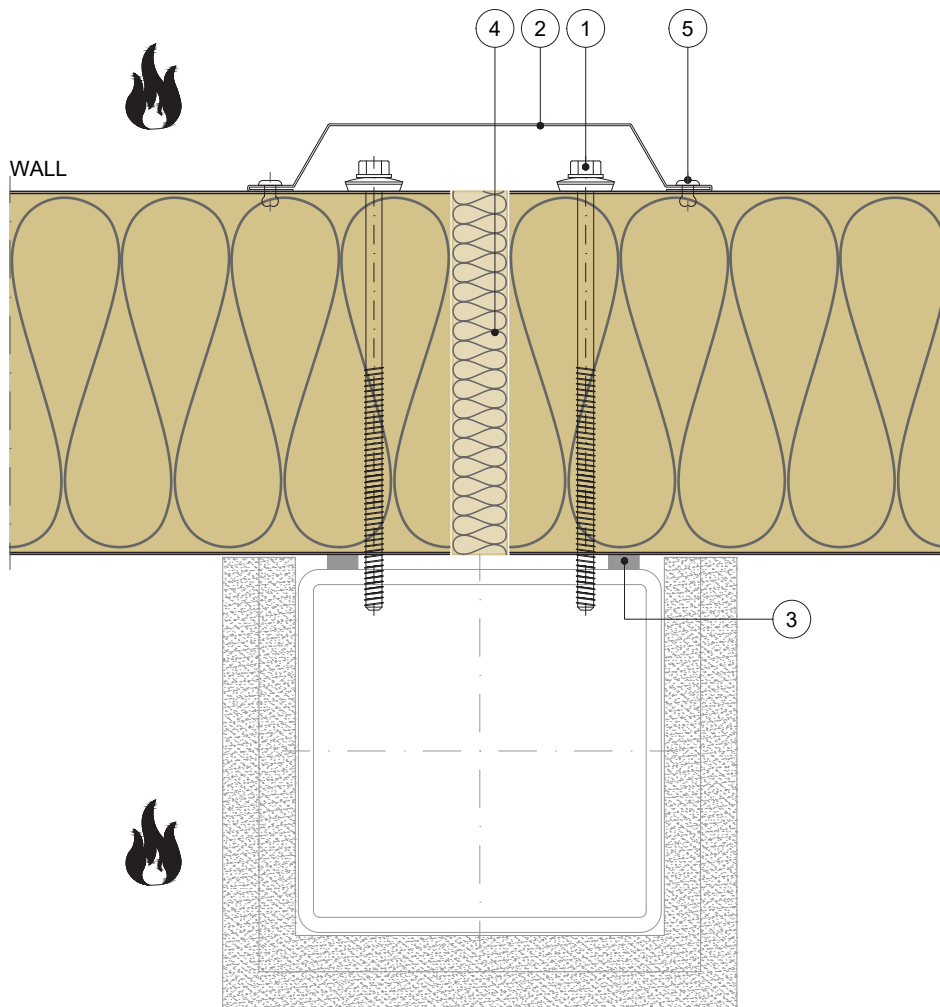
### FUNCTION

- FIRE - fire-resistant system
- FOOGIENE - food & hygiene system
- BASE - backing-wall system

### APPLICATION

- External Facade
- Internal Wall
- Flat Roof
- + External Soffit
- + Internal Ceiling
- Pitched Roof

## HORIZONTAL CUT



POS.	ELEMENTS	SCALE: M 1:2.5
1	Fixing screw - long	
2	Flashing	
3	Sealing tape	
4	Mineral wool minimal density 100kg/m3	
5	Blind rivet	

## JOINT

Trimo Group holds full copyrights on the information and details provided on this media, therefore any unauthorized reproduction and distribution is strictly prohibited.



## HORIZONTAL INSTALLATION

## TRIMOTERM FTV

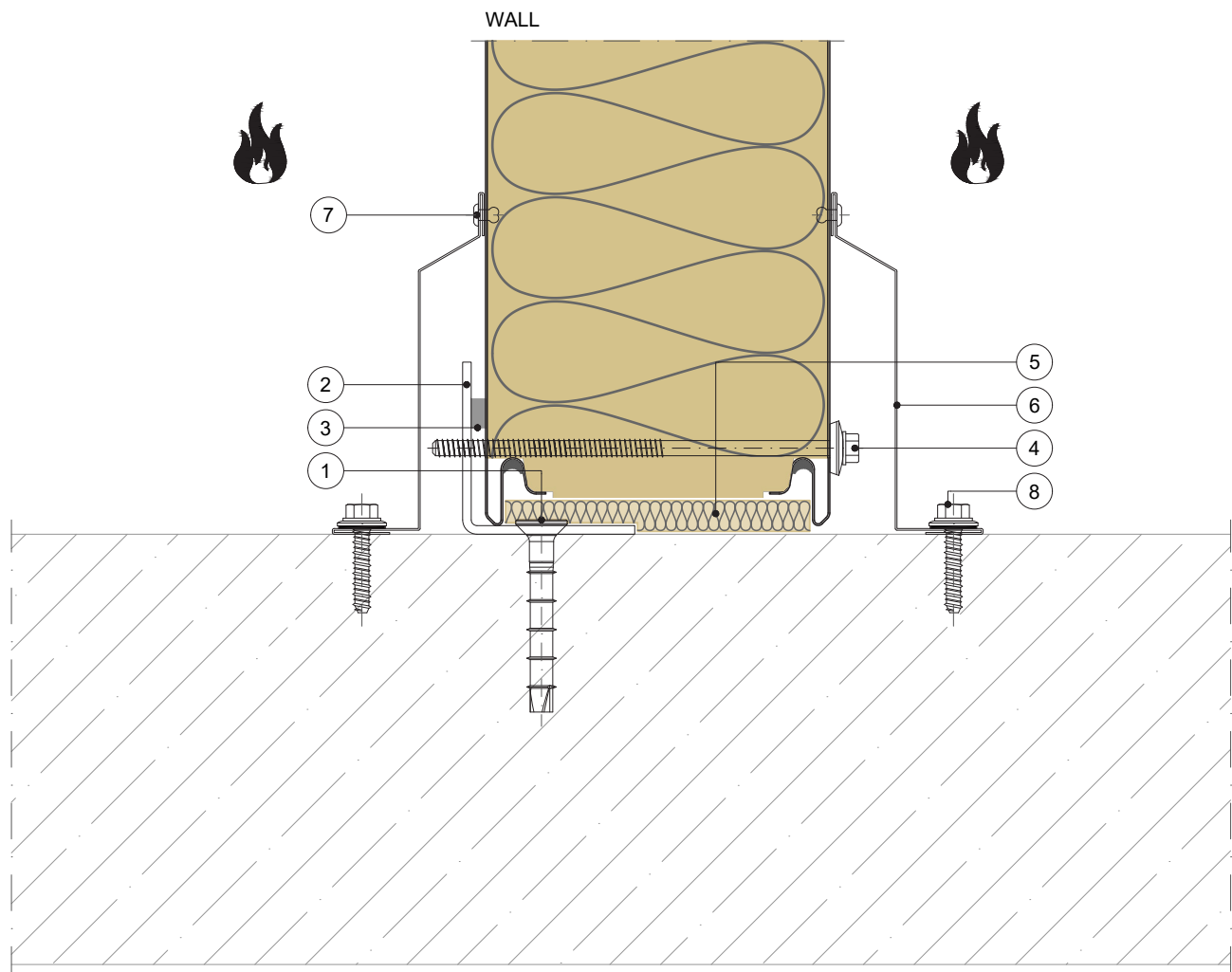
### FUNCTION

- FIRE - fire-resistant system
- FOOGIENE - food & hygiene system
- BASE - backing-wall system

### APPLICATION

- External Facade
- Internal Wall
- Flat Roof
- + External Soffit
- + Internal Ceiling
- Pitched Roof

### VERTICAL CUT



POS.	ELEMENTS	SCALE: M 1:2.5
1	Metal fixing anchor (depending on material)	
2	Support profile (recommended thickness minimal 2mm)	
3	Sealing tape	
4	Fixing screw	
5	Mineral wool minimal density 100kg/m3	
6	Flashing (optional)	
7	Blind rivet	
8	Metal fixing screw (depending on material)	

## BASE

Trimo Group holds full copyrights on the information and details provided on this media, therefore any unauthorized reproduction and distribution is strictly prohibited.



## HORIZONTAL INSTALLATION

## TRIMOTERM FTV

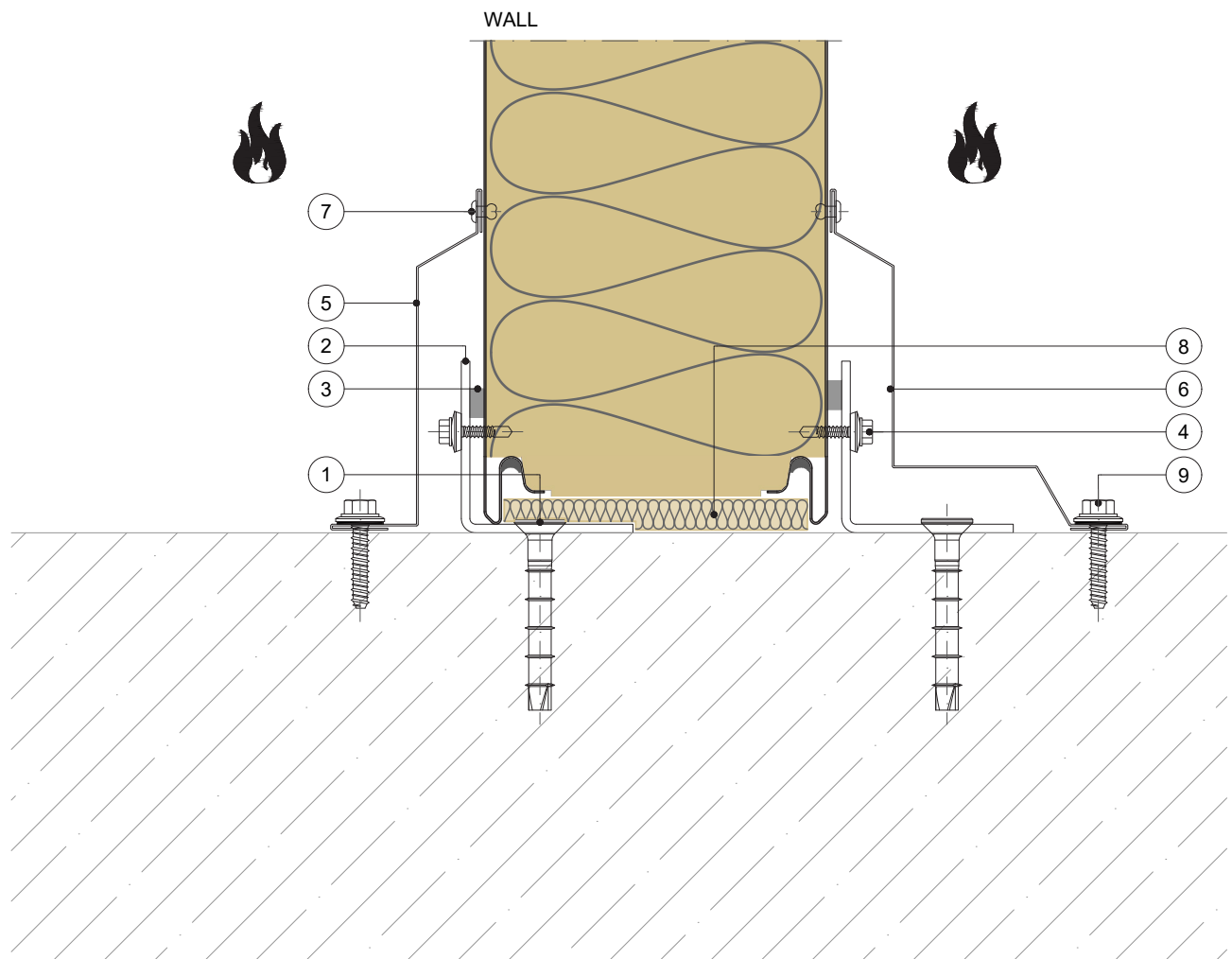
### FUNCTION

- FIRE - fire-resistant system
- FOOGIENE - food & hygiene system
- BASE - backing-wall system

### APPLICATION

- External Facade
- Internal Wall
- Flat Roof
- + External Soffit
- + Internal Ceiling
- Pitched Roof

### VERTICAL CUT



POS.	ELEMENTS	SCALE: M 1:2.5
1	Metal fixing anchor (depending on material)	
2	Support profile (recommended thickness minimal 2mm)	
3	Sealing tape	
4	Fixing screw short	
5	Flashing (optional)	
6	Flashing (optional)	
7	Blind rivet	
8	Mineral wool minimal density 100kg/m3	
9	Metal fixing screw (depending on material)	

## BASE

Trimo Group holds full copyrights on the information and details provided on this media, therefore any unauthorized reproduction and distribution is strictly prohibited.



## HORIZONTAL INSTALLATION

## TRIMOTERM FTV

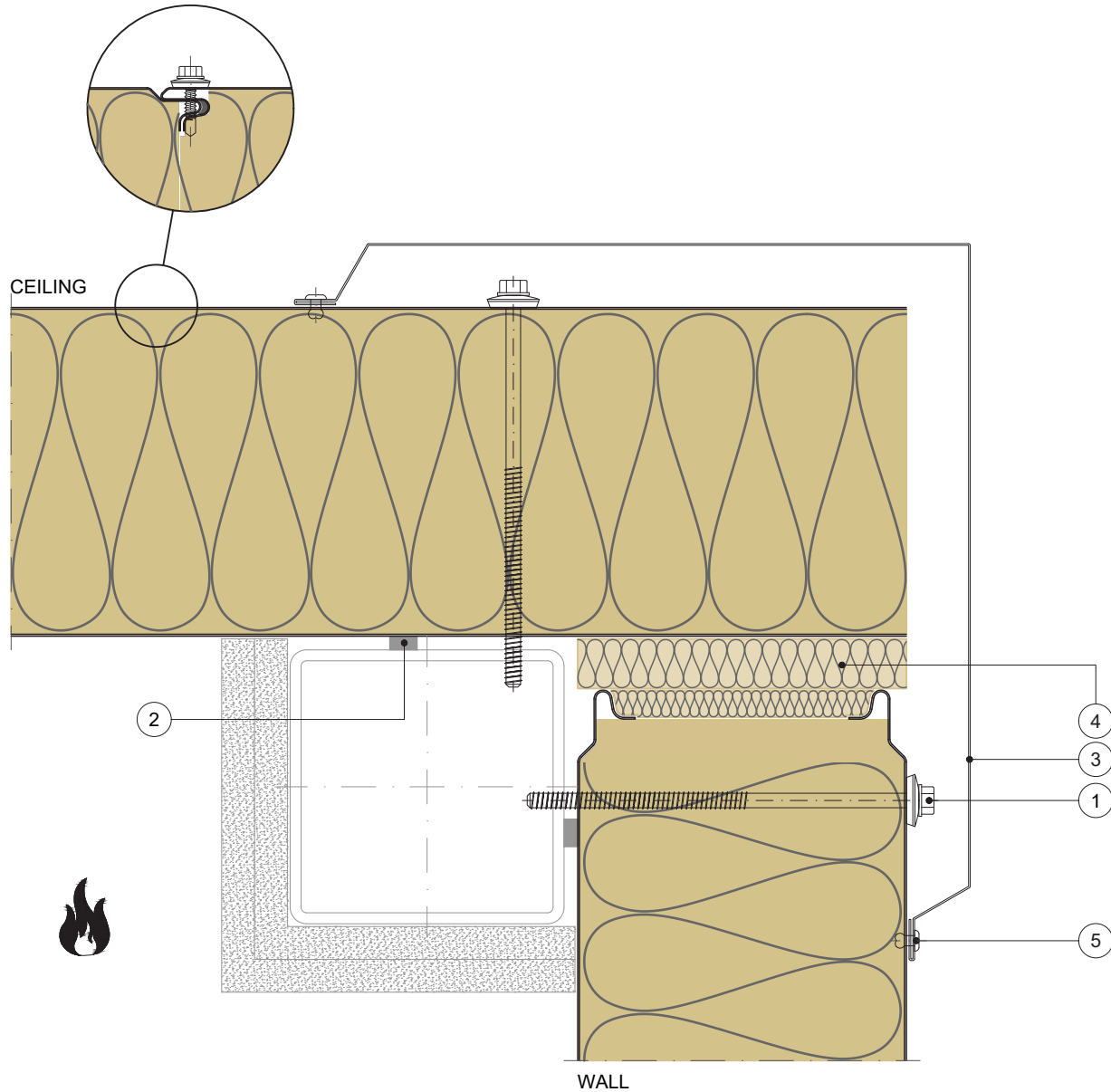
### FUNCTION

- FIRE - fire-resistant system
- FOOGIENE - food & hygiene system
- BASE - backing-wall system

### APPLICATION

- External Facade
- Internal Wall
- Flat Roof
- + External Soffit
- + Internal Ceiling
- Pitched Roof

### VERTICAL CUT



POS.	ELEMENTS	SCALE: M 1:2.5
1	Fixing screw	
2	Sealing tape	
3	Flashing	
4	Mineral wool minimal density 100kg/m3	
5	Blind rivet	

## PARAPET

Trimo Group holds full copyrights on the information and details provided on this media, therefore any unauthorized reproduction and distribution is strictly prohibited.



## HORIZONTAL INSTALLATION

## TRIMOTERM FTV

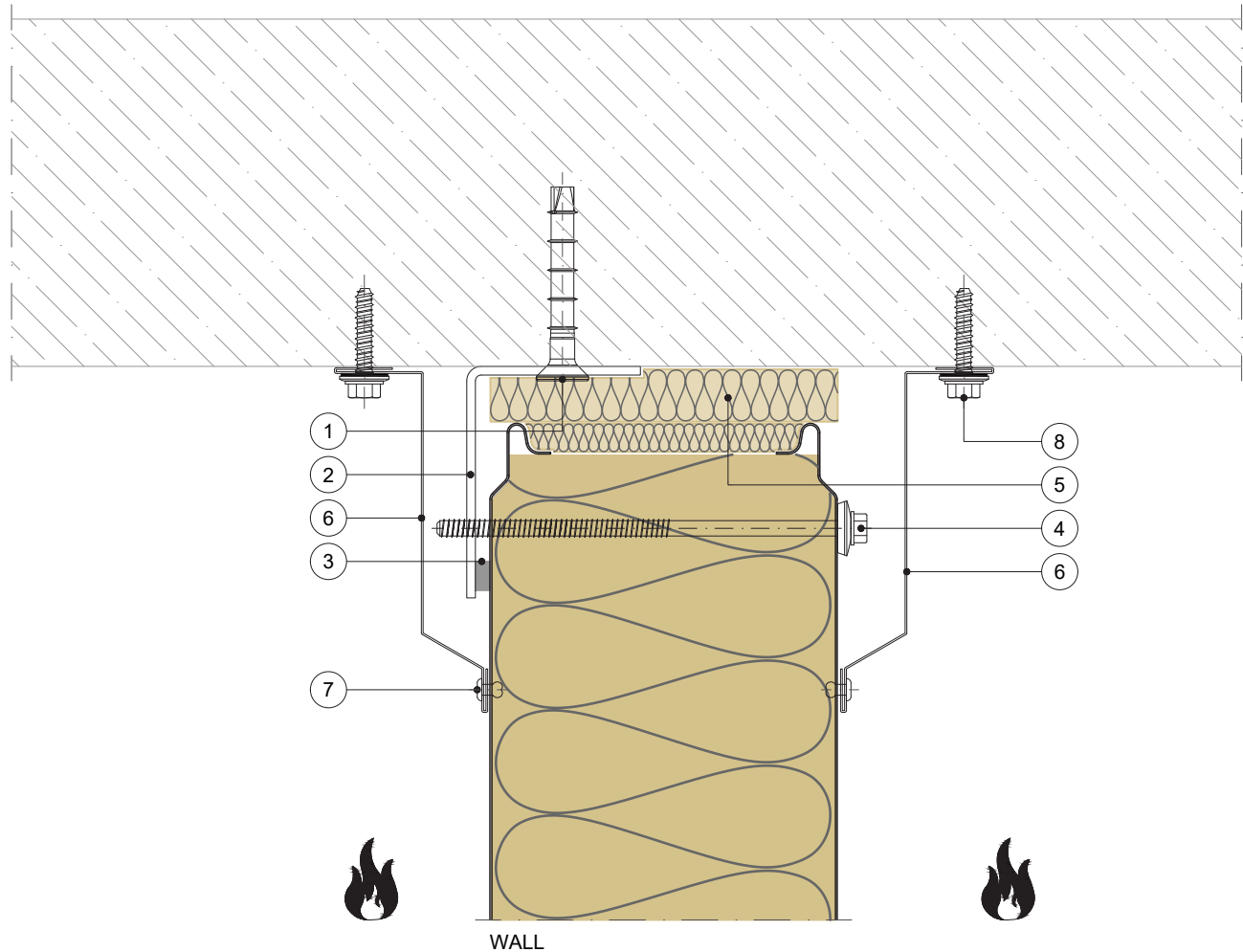
### FUNCTION

- FIRE - fire-resistant system
- FOOGIENE - food & hygiene system
- BASE - backing-wall system

### APPLICATION

- External Facade
- Internal Wall
- Flat Roof
- + External Soffit
- + Internal Ceiling
- Pitched Roof

### VERTICAL CUT



POS.	ELEMENTS	SCALE: M 1:2.5
1	Metal fixing anchor (depending on material)	
2	Support profile (recommended thickness minimal 2mm)	
3	Sealing tape	
4	Fixing screw	
5	Mineral wool minimal density 100kg/m3	
6	Flashing (optional)	
7	Blind rivet	
8	Metal fixing screw (depending on material)	





## HORIZONTAL INSTALLATION

## TRIMOTERM FTV

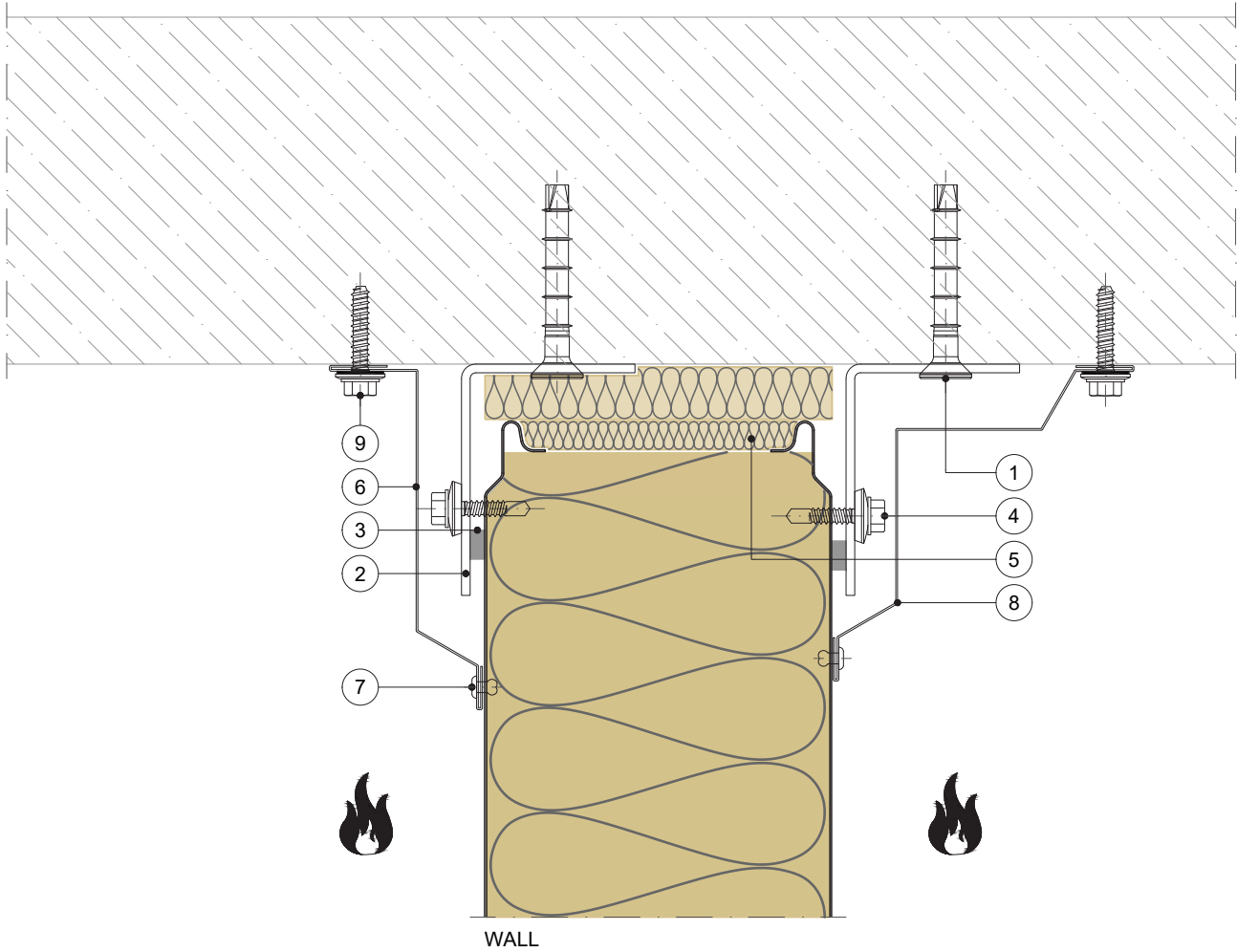
### FUNCTION

- FIRE - fire-resistant system
- FOOGIENE - food & hygiene system
- BASE - backing-wall system

### APPLICATION

- External Facade
- Internal Wall
- Flat Roof
- + External Soffit
- + Internal Ceiling
- Pitched Roof

### VERTICAL CUT



POS.	ELEMENTS	SCALE: M 1:2.5
1	Metal fixing anchor (depending on material)	
2	Support profile (recommended thickness minimal 2mm)	
3	Sealing tape	
4	Fixing screw short	
5	Mineral wool minimal density 100kg/m3	
6	Flashing (optional)	
7	Blind rivet	
8	Flashing (optional)	
9	Metal fixing screw (depending on material)	





## HORIZONTAL INSTALLATION

## TRIMOTERM FTV

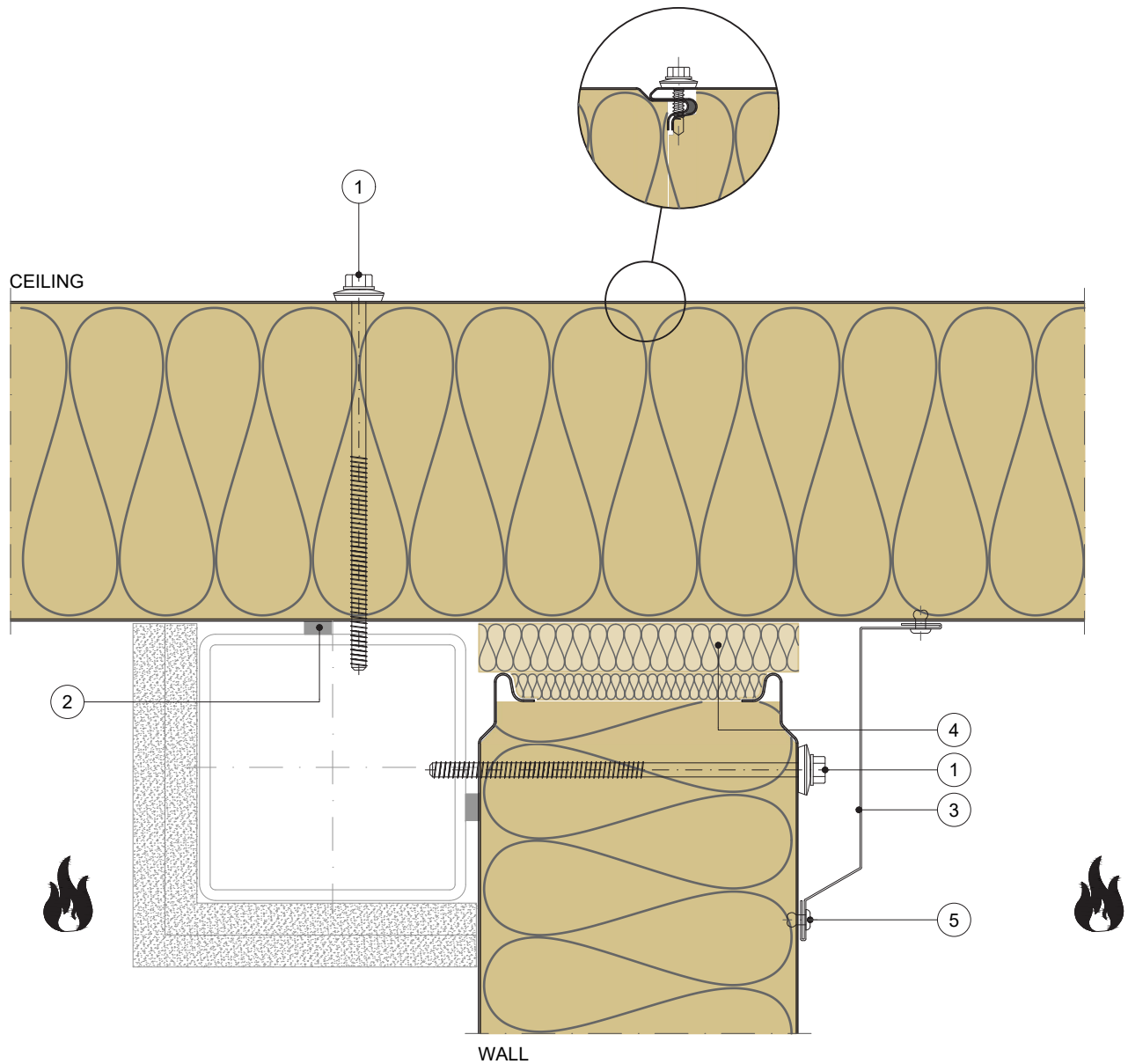
### FUNCTION

- FIRE - fire-resistant system
- FOOGIENE - food & hygiene system
- BASE - backing-wall system

### APPLICATION

- External Facade
- Internal Wall
- Flat Roof
- + External Soffit
- + Internal Ceiling
- Pitched Roof

### VERTICAL CUT



POS.	ELEMENTS	SCALE: M 1:2.5
1	Fixing screw	
2	Sealing tape	
3	Flashing (optional)	
4	Mineral wool minimal density 100kg/m3	
5	Blind rivet	

## PARAPET

Trimo Group holds full copyrights on the information and details provided on this media, therefore any unauthorized reproduction and distribution is strictly prohibited.



## HORIZONTAL INSTALLATION

## TRIMOTERM FTV

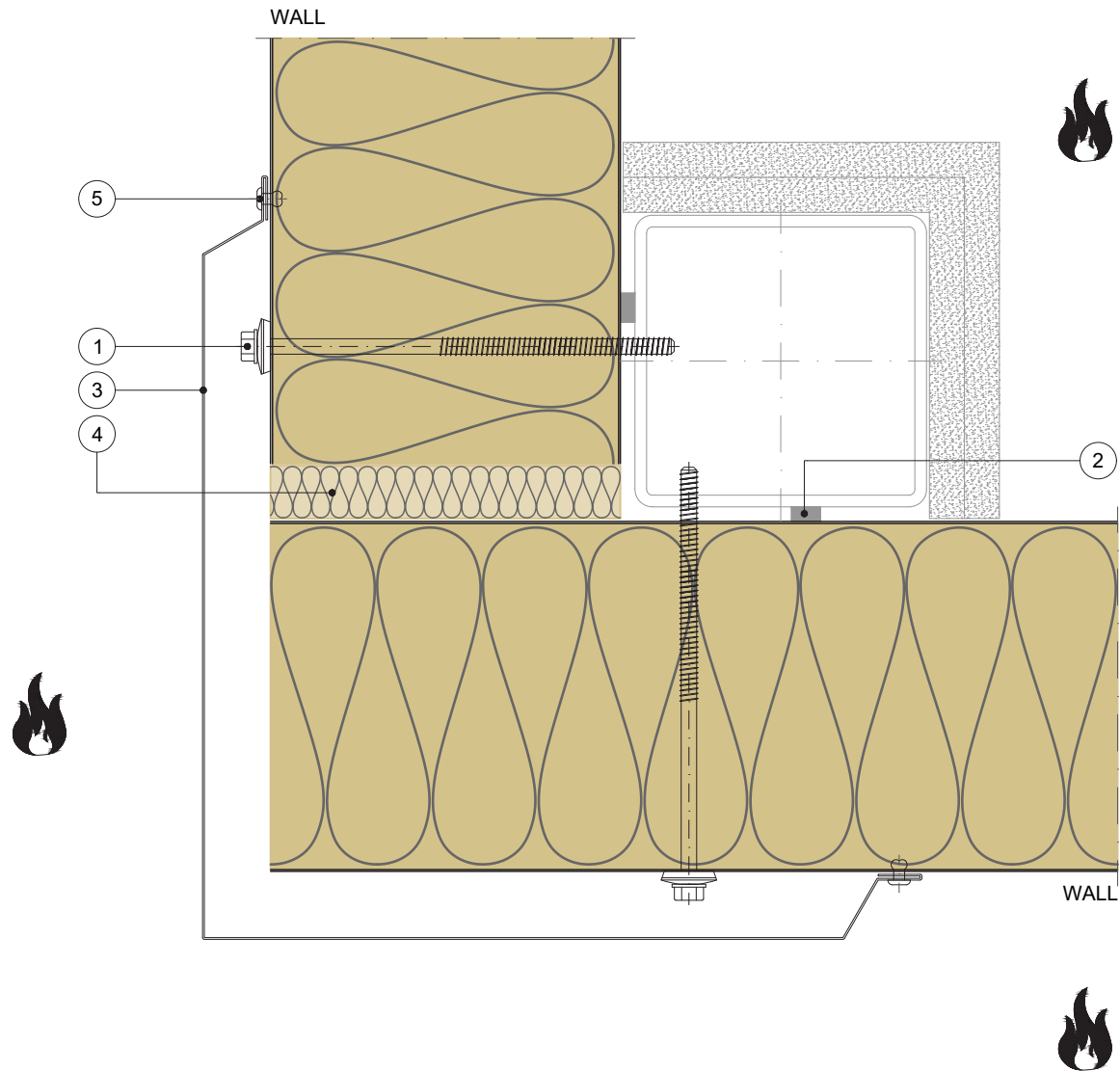
### FUNCTION

- FIRE - fire-resistant system
- FOOGIENE - food & hygiene system
- BASE - backing-wall system

### APPLICATION

- External Facade
- Internal Wall
- Flat Roof
- + External Soffit
- + Internal Ceiling
- Pitched Roof

### HORIZONTAL CUT



POS.	ELEMENTS	SCALE: M 1:2.5
1	Fixing screw	
2	Sealing tape	
3	Flashing	
4	Mineral wool minimal density 100kg/m3	
5	Blind rivet	

## EXTERNAL CORNER

Trimo Group holds full copyrights on the information and details provided on this media, therefore any unauthorized reproduction and distribution is strictly prohibited.



## HORIZONTAL INSTALLATION

# TRIMOTERM FTV

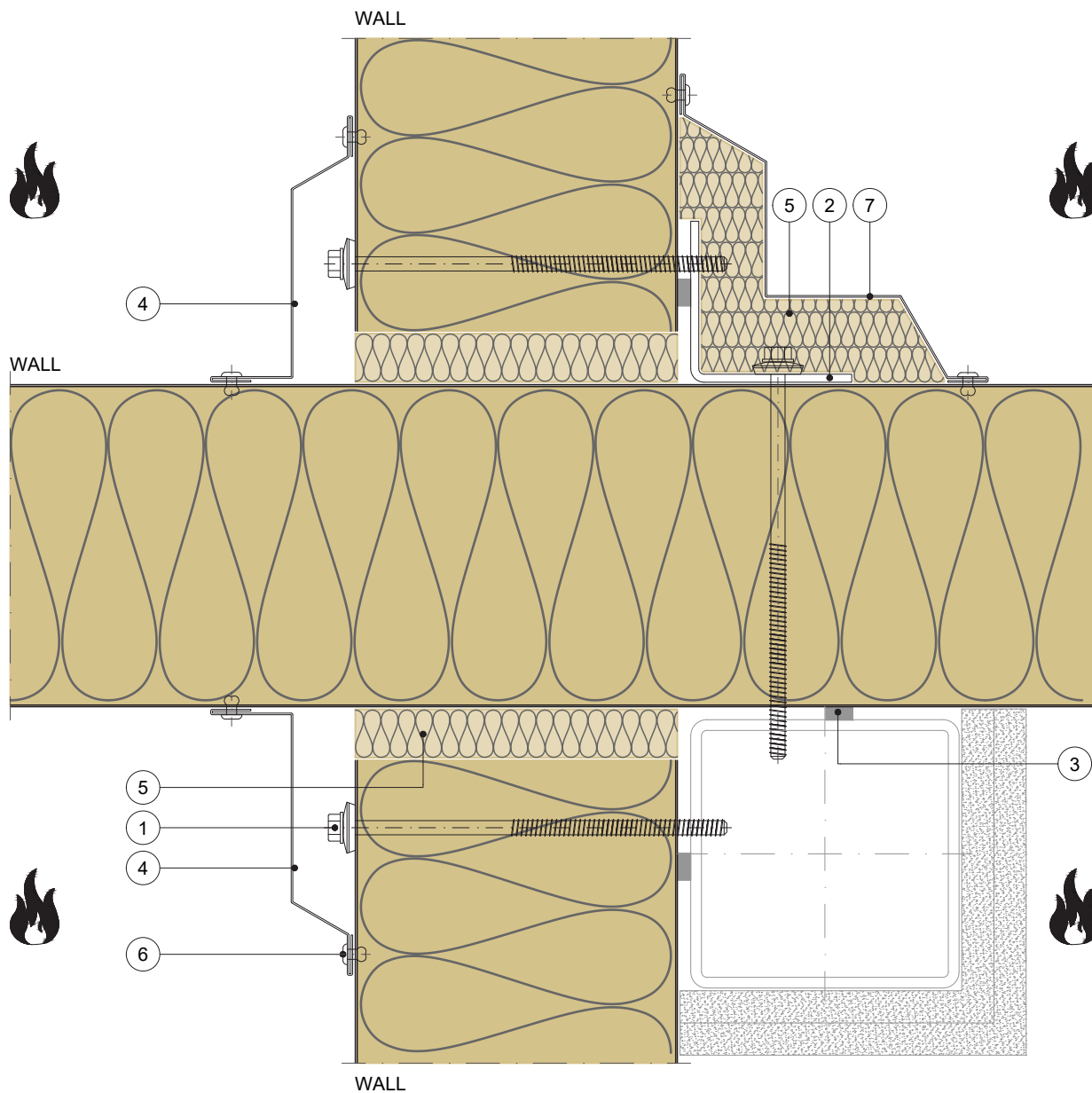
### FUNCTION

- FIRE - fire-resistant system
- FOOGIENE - food & hygiene system
- BASE - backing-wall system

### APPLICATION

- External Facade
- Internal Wall
- Flat Roof
- + External Soffit
- + Internal Ceiling
- Pitched Roof

## HORIZONTAL CUT



POS.	ELEMENTS	SCALE: M 1:2.5
1	Fixing screw	
2	Support profile (recommended thickness minimal 2mm)	
3	Sealing tape	
4	Flashing (optional)	
5	Mineral wool minimal density 100kg/m3	
6	Blind rivet	
7	Flashing	

## INTERNAL CORNER

Trimo Group holds full copyrights on the information and details provided on this media, therefore any unauthorized reproduction and distribution is strictly prohibited.





## HORIZONTAL INSTALLATION

# TRIMOTERM FTV

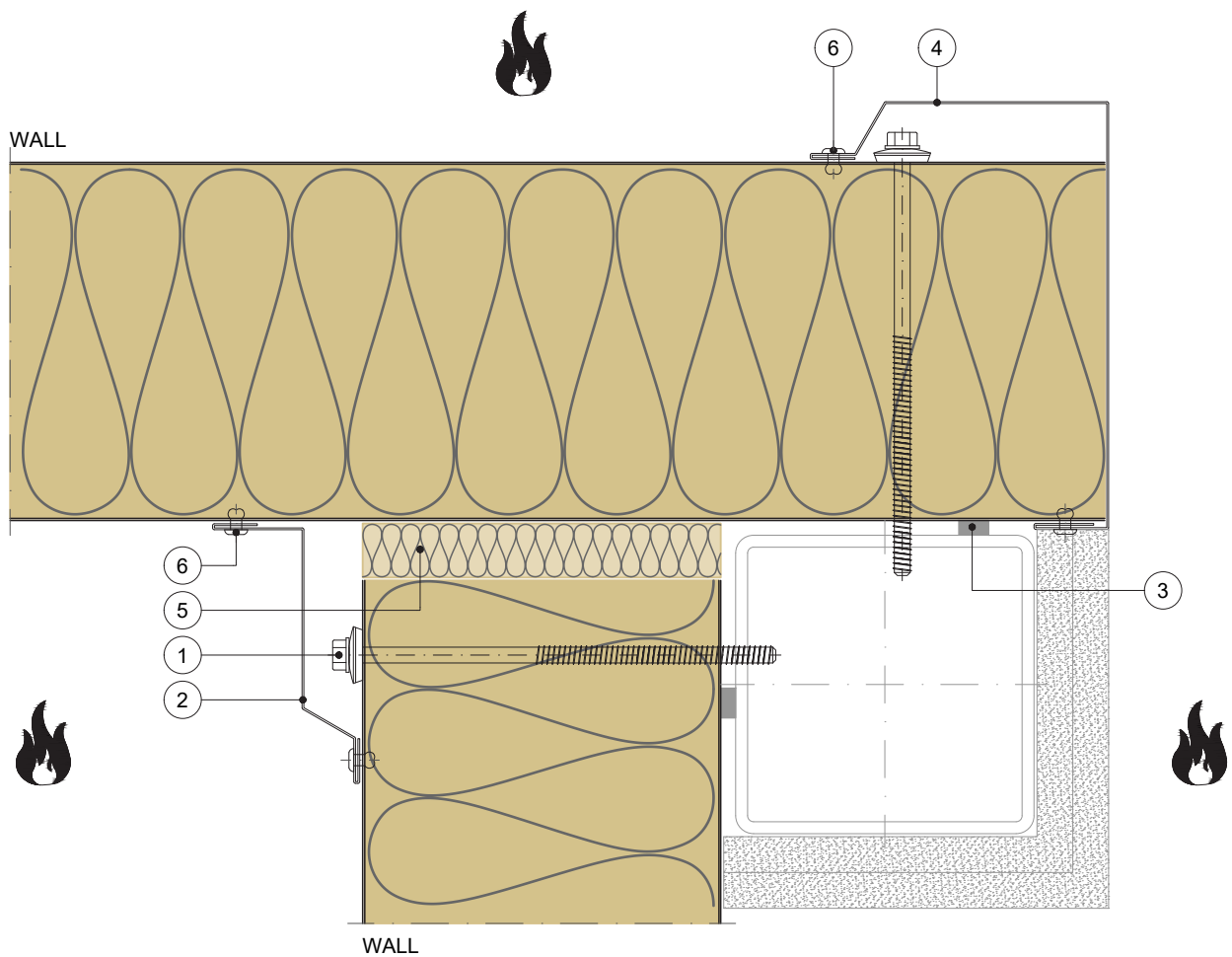
### FUNCTION

- FIRE - fire-resistant system
- FOOGIENE - food & hygiene system
- BASE - backing-wall system

### APPLICATION

- External Facade
- Internal Wall
- Flat Roof
- + External Soffit
- + Internal Ceiling
- Pitched Roof

## HORIZONTAL CUT



POS.	ELEMENTS	SCALE: M 1:2.5
1	Fixing screw	
2	Flashing (optional)	
3	Sealing tape	
4	Flashing	
5	Mineral wool minimal density 100kg/m3	
6	Blind rivet	

## INTERNAL CORNER

Trimo Group holds full copyrights on the information and details provided on this media, therefore any unauthorized reproduction and distribution is strictly prohibited.



## HORIZONTAL INSTALLATION

# TRIMOTERM FTV

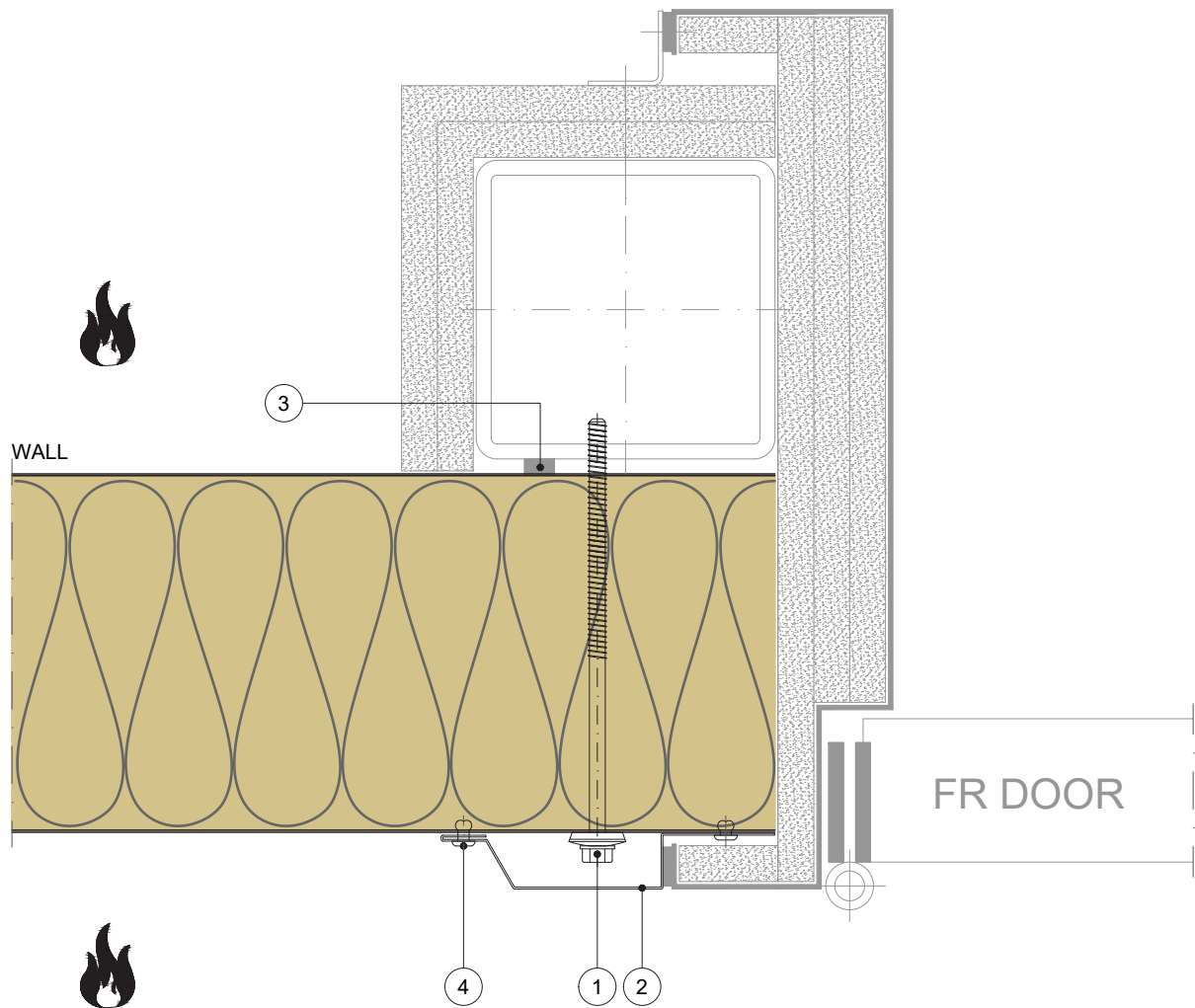
### FUNCTION

- FIRE - fire-resistant system
- FOOGIENE - food & hygiene system
- BASE - backing-wall system

### APPLICATION

- External Facade
- Internal Wall
- Flat Roof
- + External Soffit
- + Internal Ceiling
- Pitched Roof

### HORIZONTAL CUT



POS.	ELEMENTS	SCALE: M 1:2.5
1	Fixing screw	
2	Flashing (optional)	
3	Sealing tape	
4	Blind rivet	

## DOOR

Trimo Group holds full copyrights on the information and details provided on this media, therefore any unauthorized reproduction and distribution is strictly prohibited.



## HORIZONTAL INSTALLATION

## TRIMOTERM FTV

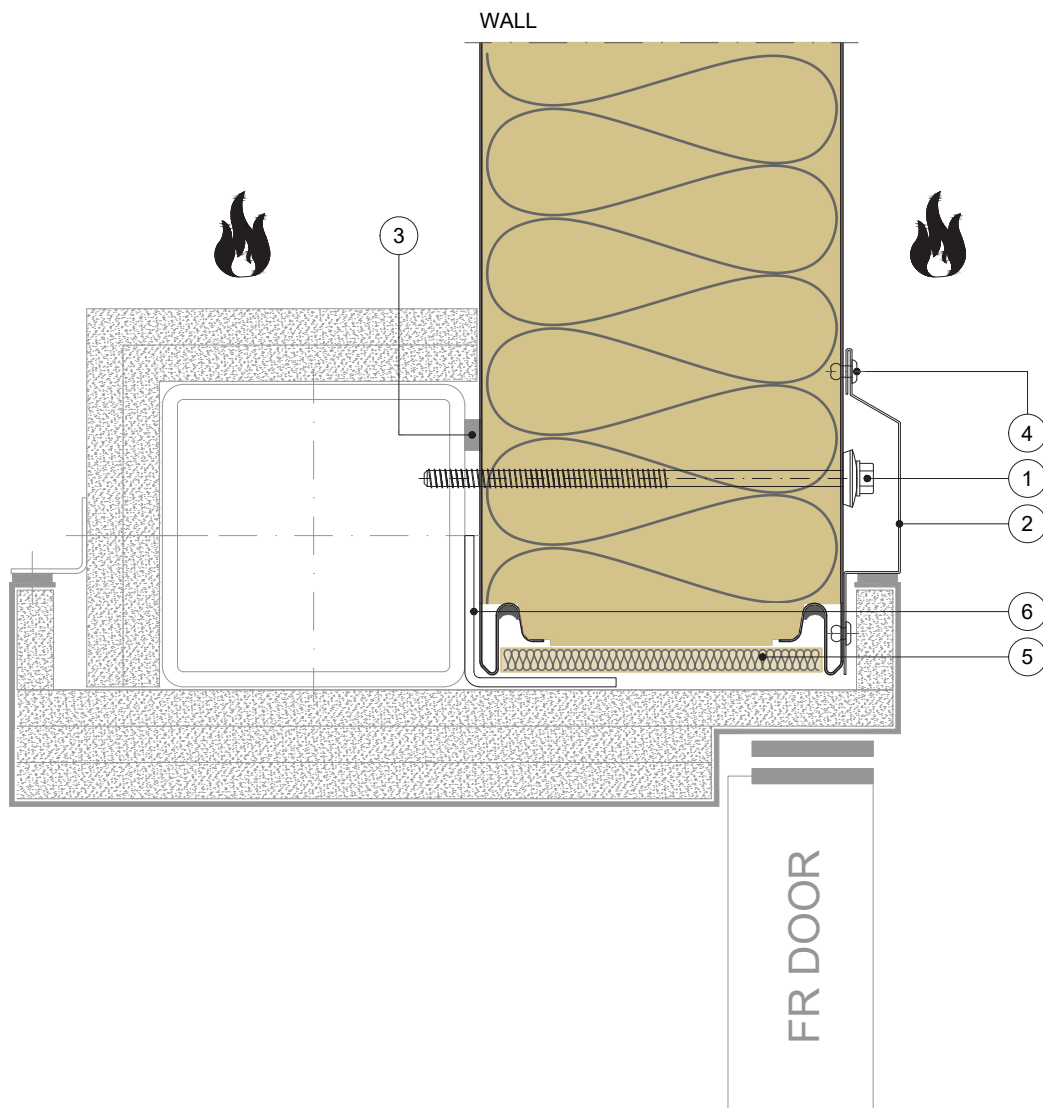
### FUNCTION

- FIRE - fire-resistant system
- FOOGIENE - food & hygiene system
- BASE - backing-wall system

### APPLICATION

- External Facade + External Soffit
- Internal Wall + Internal Ceiling
- Flat Roof ○ Pitched Roof

### VERTICAL CUT



POS.	ELEMENTS	SCALE: M 1:2.5
1	Fixing screw	
2	Flashing (optional)	
3	Sealing tape	
4	Blind rivet	
5	Mineral wool minimal density 100kg/m3	
6	Support profile	

## DOOR

Trimo Group holds full copyrights on the information and details provided on this media, therefore any unauthorized reproduction and distribution is strictly prohibited.





## HORIZONTAL INSTALLATION

# TRIMOTERM FTV

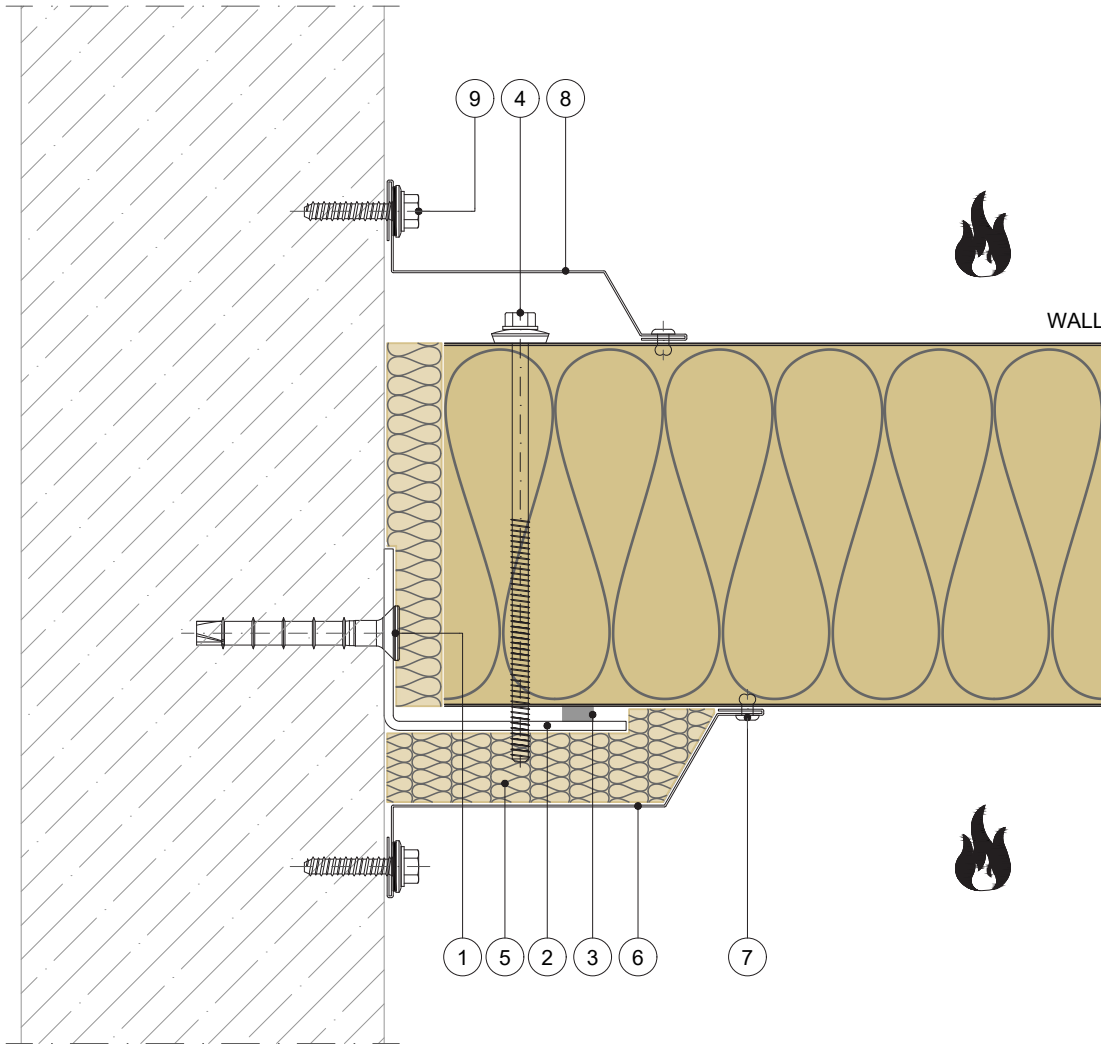
### FUNCTION

- FIRE - fire-resistant system
- FOOGIENE - food & hygiene system
- BASE - backing-wall system

### APPLICATION

- External Facade
- Internal Wall
- Flat Roof
- + External Soffit
- + Internal Ceiling
- Pitched Roof

### HORIZONTAL CUT



POS.	ELEMENTS	SCALE: M 1:2.5
1	Metal fixing anchor (depending on material)	
2	Support profile (recommended thickness minimal 2mm)	
3	Sealing tape	
4	Fixing screw	
5	Mineral wool minimal density 100kg/m3	
6	Flashing	
7	Blind rivet	
8	Flashing (optional)	
9	Metal fixing screw (depending on material)	

## OTHER SYSTEM CONNECTION

Trimo Group holds full copyrights on the information and details provided on this media, therefore any unauthorized reproduction and distribution is strictly prohibited.



## HORIZONTAL INSTALLATION

# TRIMOTERM FTV

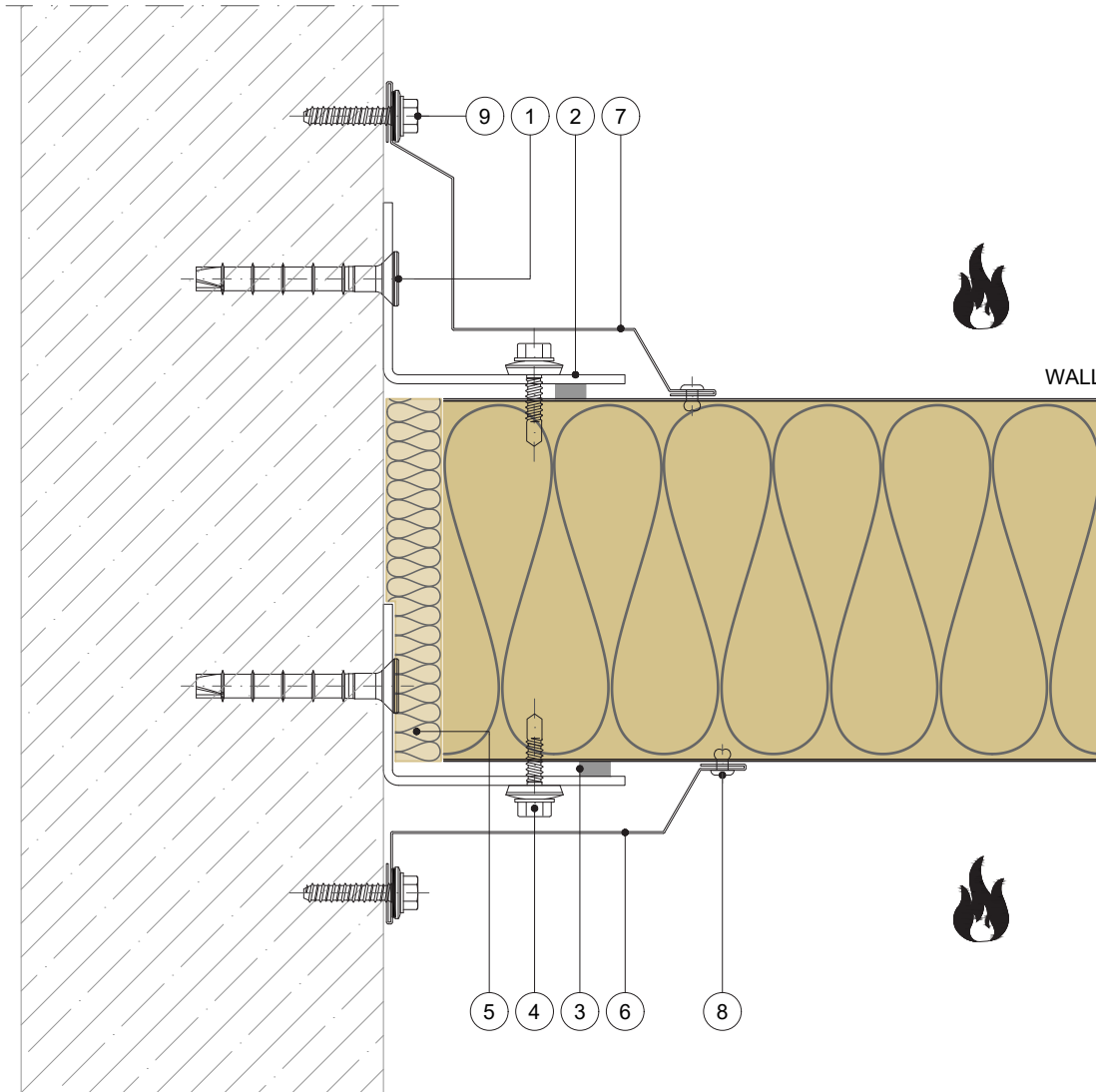
### FUNCTION

- FIRE - fire-resistant system
- FOOGIENE - food & hygiene system
- BASE - backing-wall system

### APPLICATION

- External Facade
- Internal Wall
- Flat Roof
- + External Soffit
- + Internal Ceiling
- Pitched Roof

### HORIZONTAL CUT



POS.	ELEMENTS	SCALE: M 1:2.5
1	Metal fixing anchor (depending on material)	
2	Support profile (recommended thickness minimal 2mm)	
3	Sealing tape	
4	Fixing screw short	
5	Mineral wool minimal density 100kg/m3	
6	Flashing (optional)	
7	Flashing (optional)	
8	Blind rivet	
9	Metal fixing screw (depending on material)	

## OTHER SYSTEM CONNECTION

Trimo Group holds full copyrights on the information and details provided on this media, therefore any unauthorized reproduction and distribution is strictly prohibited.



## HORIZONTAL INSTALLATION

## TRIMOTERM FTV

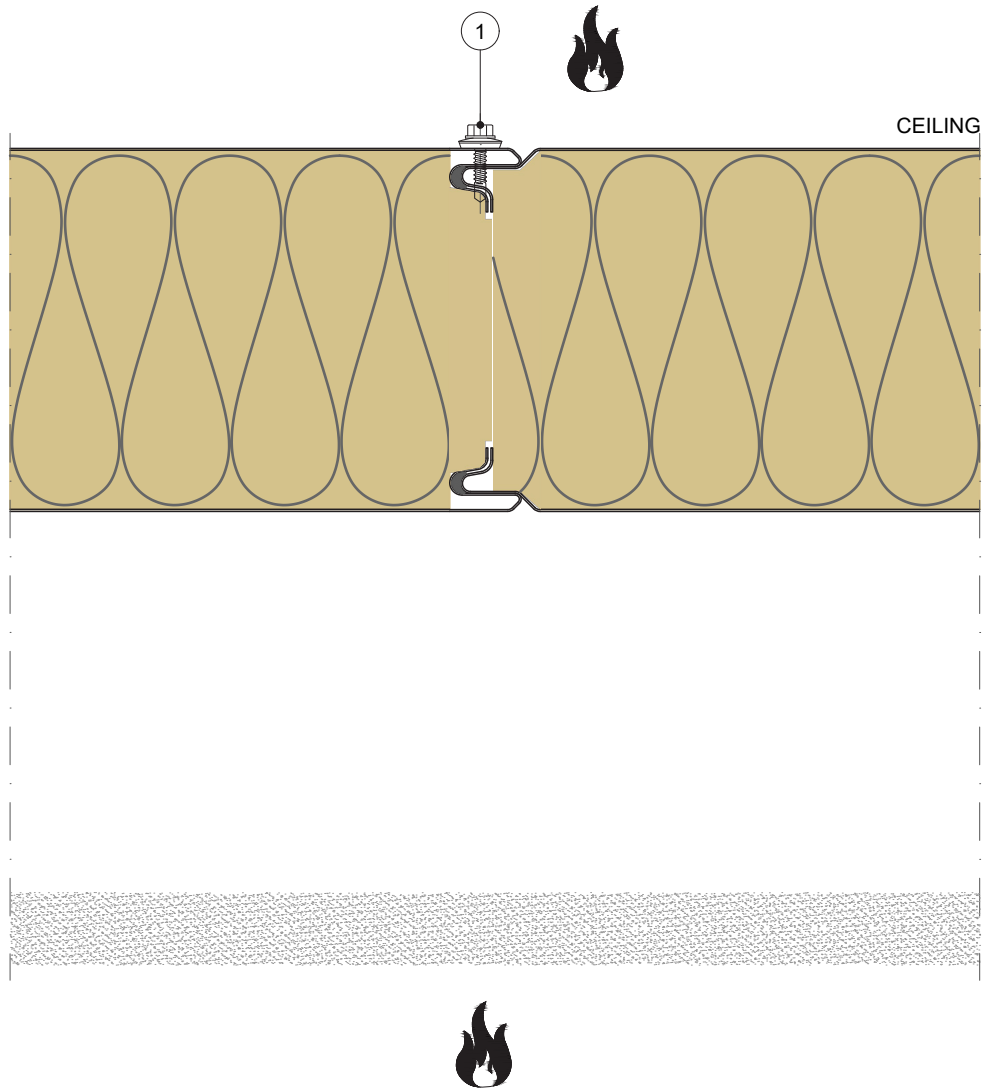
### FUNCTION

- FIRE - fire-resistant system
- FOOGIENE - food & hygiene system
- BASE - backing-wall system

### APPLICATION

- External Facade
- Internal Wall
- Flat Roof
- + External Soffit
- + Internal Ceiling
- Pitched Roof

### VERTICAL CUT



POS.

ELEMENTS

SCALE: M 1:2.5

1

Stitching screw

## CEILING

Trimo Group holds full copyrights on the information and details provided on this media, therefore any unauthorized reproduction and distribution is strictly prohibited.



## HORIZONTAL INSTALLATION

## TRIMOTERM FTV

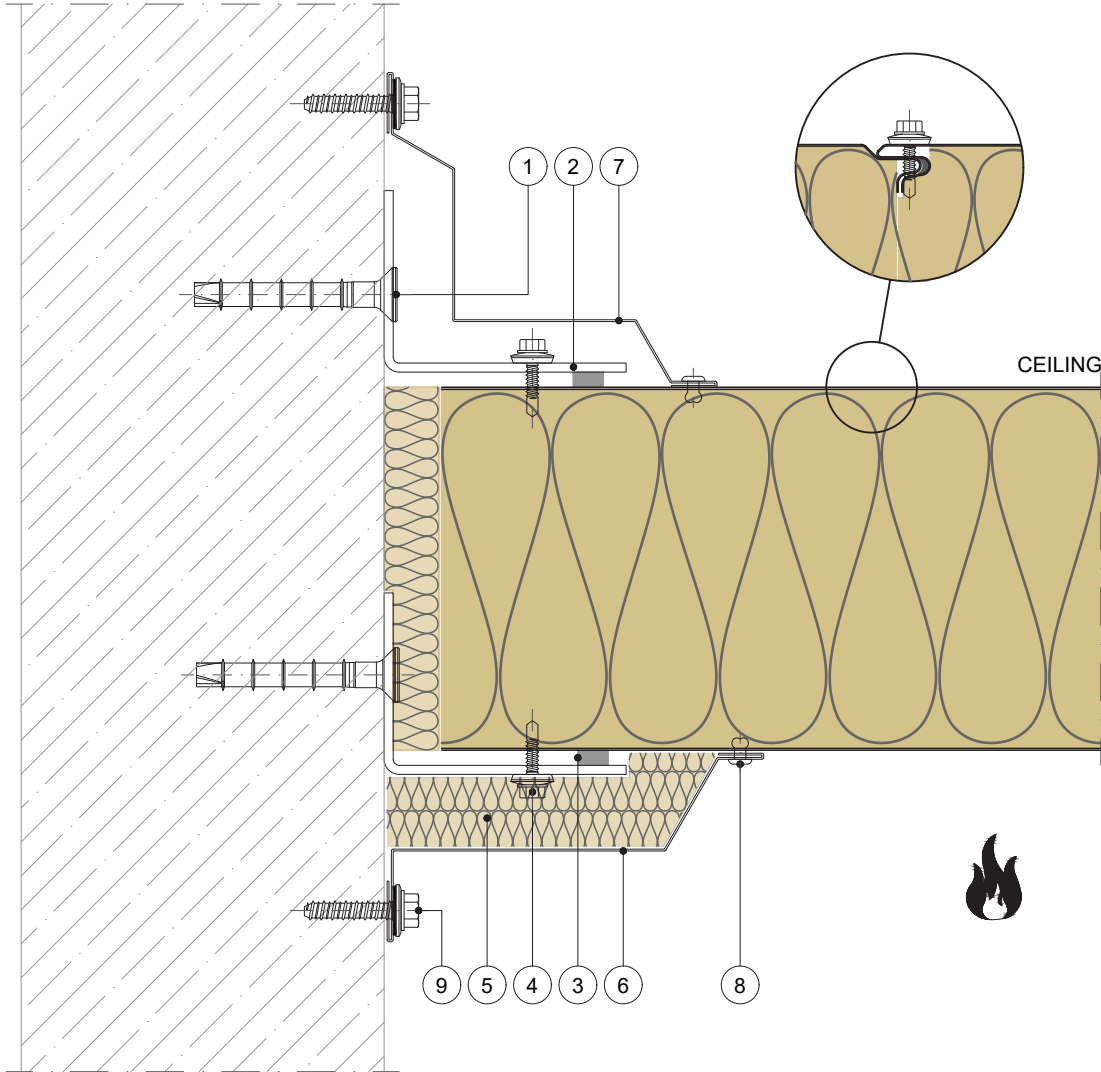
### FUNCTION

- FIRE - fire-resistant system
- FOOGIENE - food & hygiene system
- BASE - backing-wall system

### APPLICATION

- External Facade
- Internal Wall
- Flat Roof
- + External Soffit
- + Internal Ceiling
- Pitched Roof

### VERTICAL CUT



POS.	ELEMENTS	SCALE: M 1:2.5
1	Metal fixing anchor (depending on material)	
2	Support profile (recommended thickness minimal 2mm)	
3	Sealing tape	
4	Fixing screw short	
5	Mineral wool minimal density 100kg/m3	
6	Flashing	
7	Flashing (optional)	
8	Blind rivet	
9	Metal fixing screw (depending on material)	

## CEILING

Trimo Group holds full copyrights on the information and details provided on this media, therefore any unauthorized reproduction and distribution is strictly prohibited.



## HORIZONTAL INSTALLATION

## TRIMOTERM FTV

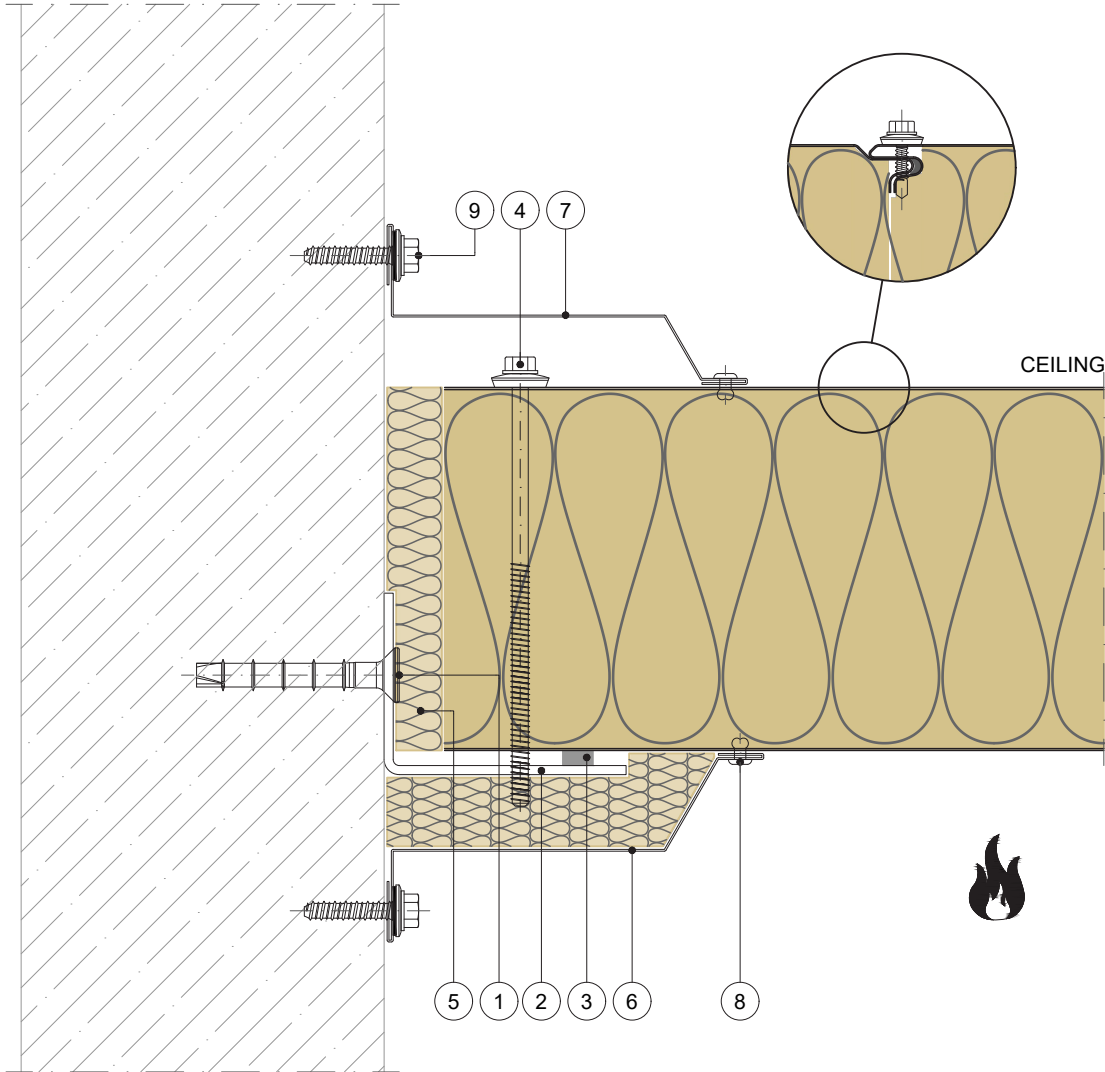
### FUNCTION

- FIRE - fire-resistant system
- FOOGIENE - food & hygiene system
- BASE - backing-wall system

### APPLICATION

- External Facade
- Internal Wall
- Flat Roof
- + External Soffit
- + Internal Ceiling
- Pitched Roof

### VERTICAL CUT



POS.	ELEMENTS	SCALE: M 1:2.5
1	Metal fixing anchor (depending on material)	
2	Support profile (recommended thickness minimal 2mm)	
3	Sealing tape	
4	Fixing screw	
5	Mineral wool minimal density 100kg/m3	
6	Flashing	
7	Flashing (optional)	
8	Blind rivet	
9	Metal fixing screw (depending on material)	

## CEILING

Trimo Group holds full copyrights on the information and details provided on this media, therefore any unauthorized reproduction and distribution is strictly prohibited.



## HORIZONTAL INSTALLATION

## TRIMOTERM FTV

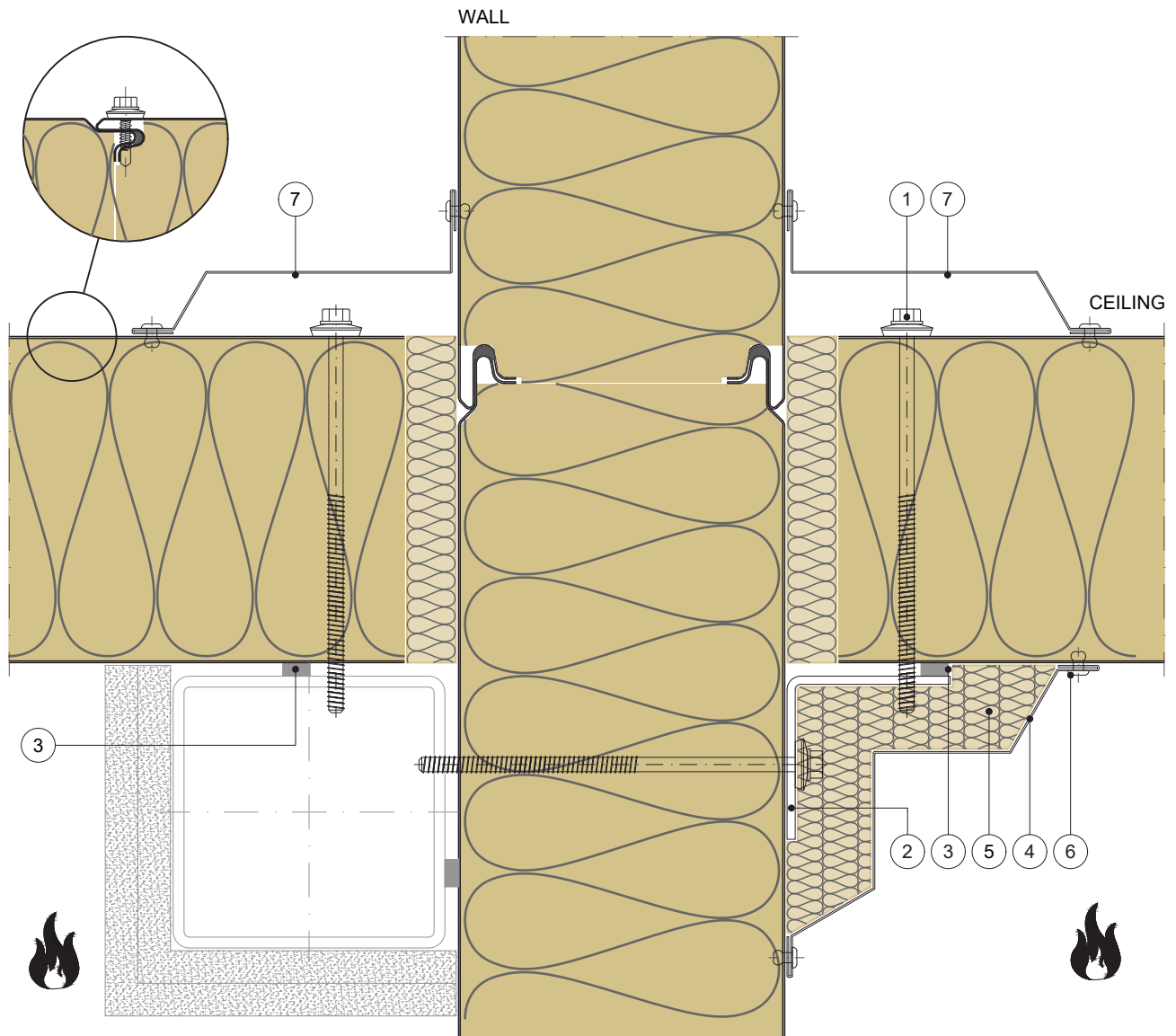
### FUNCTION

- FIRE - fire-resistant system
- FOOGIENE - food & hygiene system
- BASE - backing-wall system

### APPLICATION

- External Facade
- Internal Wall
- Flat Roof
- + External Soffit
- + Internal Ceiling
- Pitched Roof

### VERTICAL CUT



POS.	ELEMENTS	SCALE: M 1:2.5
1	Fixing screw	
2	Support profile (recommended thickness minimal 2mm)	
3	Sealing tape	
4	Flashing	
5	Mineral wool minimal density 100kg/m3	
6	Blind rivet	
7	Flashing (optional)	

## CEILING

Trimo Group holds full copyrights on the information and details provided on this media, therefore any unauthorized reproduction and distribution is strictly prohibited.



## HORIZONTAL INSTALLATION

## TRIMOTERM FTV

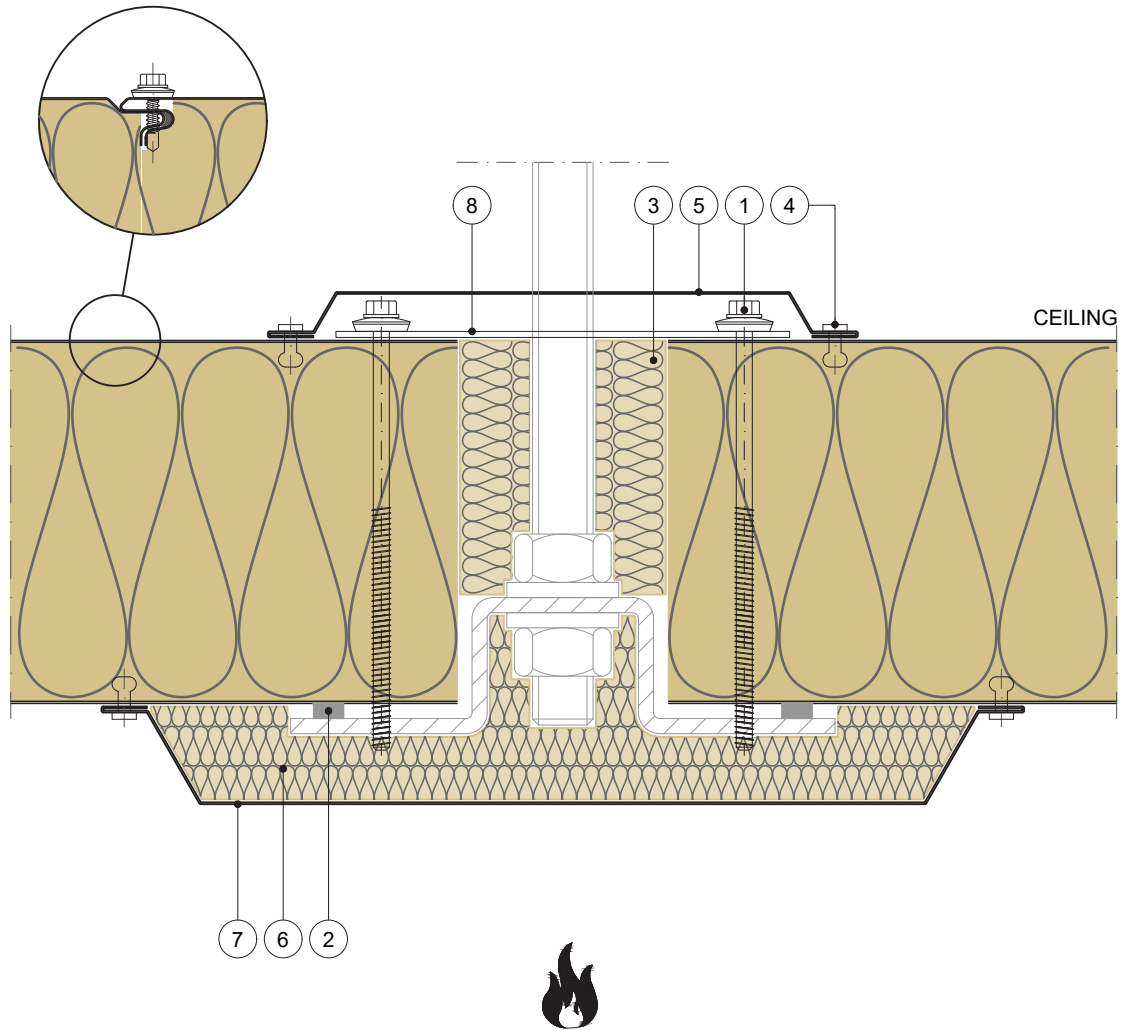
### FUNCTION

- FIRE - fire-resistant system
- FOOGIENE - food & hygiene system
- BASE - backing-wall system

### APPLICATION

- External Facade
- Internal Wall
- Flat Roof
- + External Soffit
- + Internal Ceiling
- Pitched Roof

### VERTICAL CUT



POS.	ELEMENT	SCALE: M 1:2.5
1	Fixing screw	
2	Sealing tape	
3	Mineral wool minimal density 100kg/m3	
4	Blind rivet	
5	Flashing (optional)	
6	Mineral wool minimal density 100kg/m3	
7	Flashing	
8	Connection steel plate	

## CEILING

Trimo Group holds full copyrights on the information and details provided on this media, therefore any unauthorized reproduction and distribution is strictly prohibited.





## HORIZONTAL INSTALLATION

## TRIMOTERM FTV

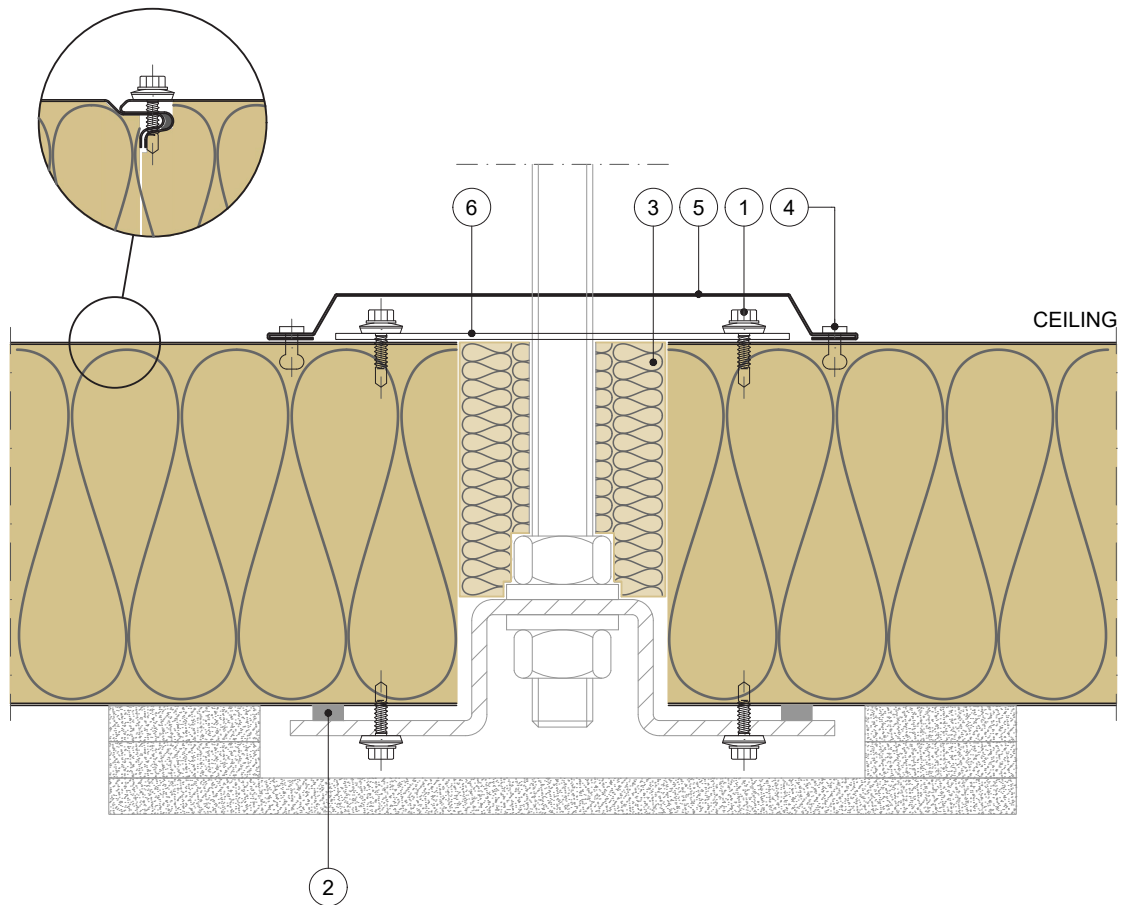
### FUNCTION

- FIRE - fire-resistant system
- FOOGIENE - food & hygiene system
- BASE - backing-wall system

### APPLICATION

- External Facade
- Internal Wall
- Flat Roof
- + External Soffit
- + Internal Ceiling
- Pitched Roof

### VERTICAL CUT



POS.	ELEMENT	SCALE: M 1:2.5
1	Fixing screw	
2	Sealing tape	
3	Mineral wool minimal density 100kg/m <sup>3</sup>	
4	Blind rivet	
5	Flashing (optional)	
6	Connection steel plate	

## CEILING

Trimo Group holds full copyrights on the information and details provided on this media, therefore any unauthorized reproduction and distribution is strictly prohibited.



## VERTICAL INSTALLATION

## TRIMOTERM FTV

### FUNCTION

- FIRE - fire-resistant system
- FOOGIENE - food & hygiene system
- BASE - backing-wall system

### APPLICATION

- External Facade
- Internal Wall
- Flat Roof
- External Soffit
- Internal Ceiling
- Pitched Roof

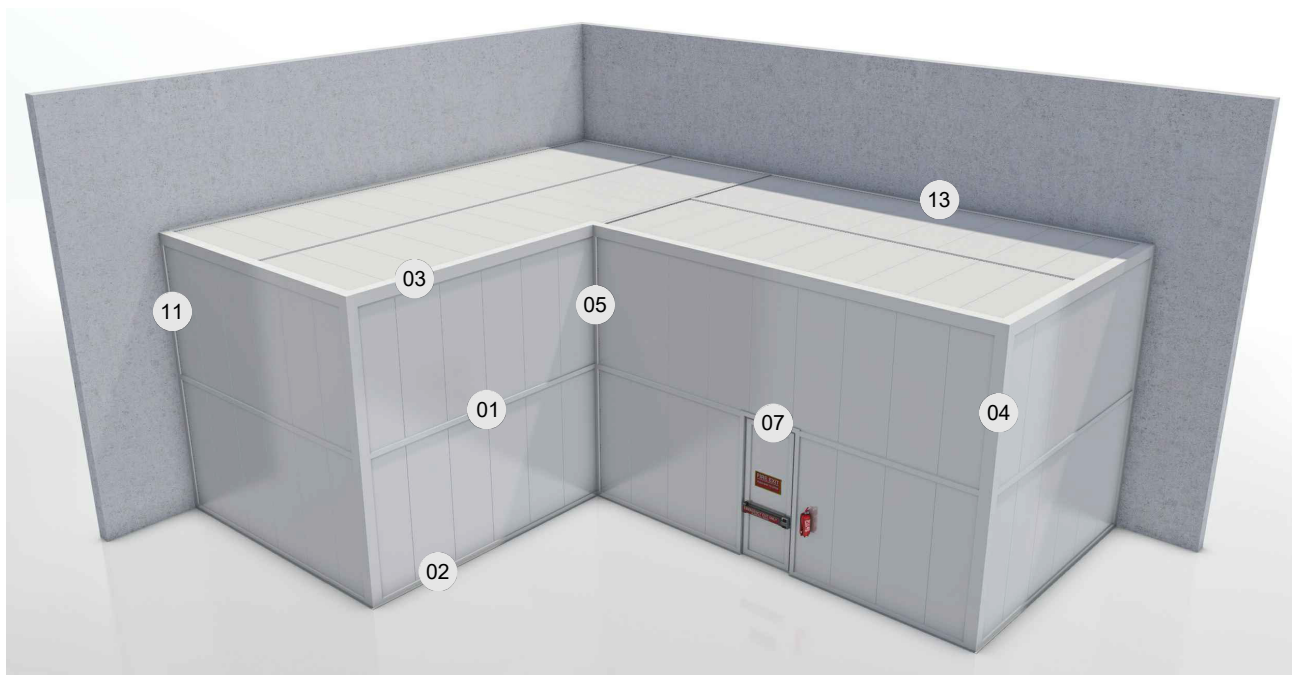


CAD download centre



BIM download centre

- TE-V-01 JOINT
- TE-V-02 BASE
- TE-V-03 PARAPET
- TE-V-04 EXTERNAL CORNER
- TE-V-05 INTERNAL CORNER
- TE-V-07 DOOR
- TE-V-11 OTHER SYSTEM CONNECTION
- TE-V-13 CEILING



## SCHEME

Trimo Group holds full copyrights on the information and details provided on this media, therefore any unauthorized reproduction and distribution is strictly prohibited.



## VERTICAL INSTALLATION

## TRIMOTERM FTV

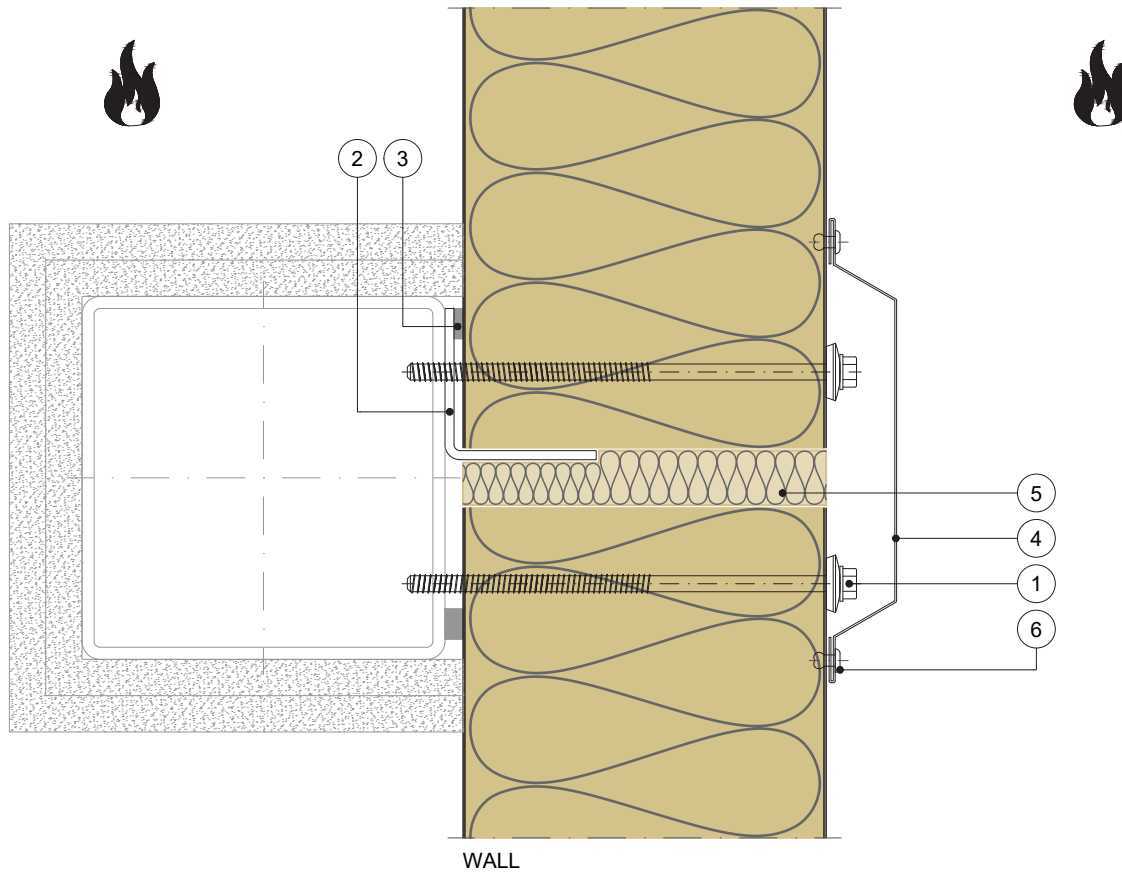
### FUNCTION

- FIRE - fire-resistant system
- FOOGIENE - food & hygiene system
- BASE - backing-wall system

### APPLICATION

- External Facade
- Internal Wall
- Flat Roof
- + External Soffit
- + Internal Ceiling
- Pitched Roof

### VERTICAL CUT



POS.	ELEMENTS	SCALE: M 1:2.5
1	Fixing screw	
2	Support profile (recommended thickness minimal 2mm)	
3	Sealing tape	
4	Flashing	
5	Mineral wool minimal density 100kg/m3	
6	Blind rivet	

## JOINT

Trimo Group holds full copyrights on the information and details provided on this media, therefore any unauthorized reproduction and distribution is strictly prohibited.



## VERTICAL INSTALLATION

## TRIMOTERM FTV

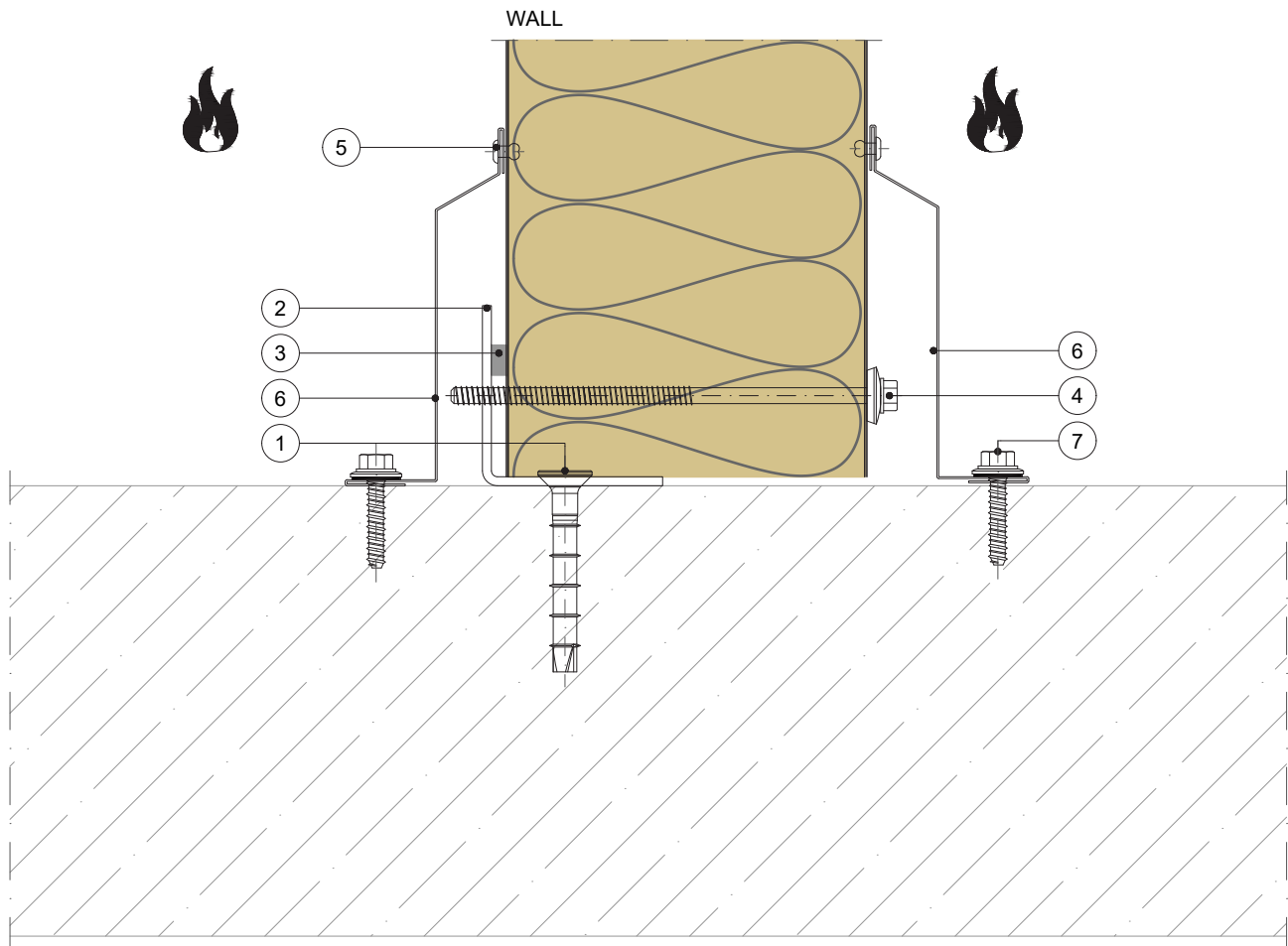
### FUNCTION

- FIRE - fire-resistant system
- FOOGIENE - food & hygiene system
- BASE - backing-wall system

### APPLICATION

- External Facade
- Internal Wall
- Flat Roof
- + External Soffit
- + Internal Ceiling
- Pitched Roof

### VERTICAL CUT



POS.	ELEMENTS	SCALE: M 1:2.5
1	Metal fixing anchor (depending on material)	
2	Support profile (recommended thickness minimal 2mm)	
3	Sealing tape	
4	Fixing screw	
5	Blind rivet	
6	Flashing (optional)	
7	Metal fixing screw (depending on material)	

## BASE

Trimo Group holds full copyrights on the information and details provided on this media, therefore any unauthorized reproduction and distribution is strictly prohibited.



## VERTICAL INSTALLATION

## TRIMOTERM FTV

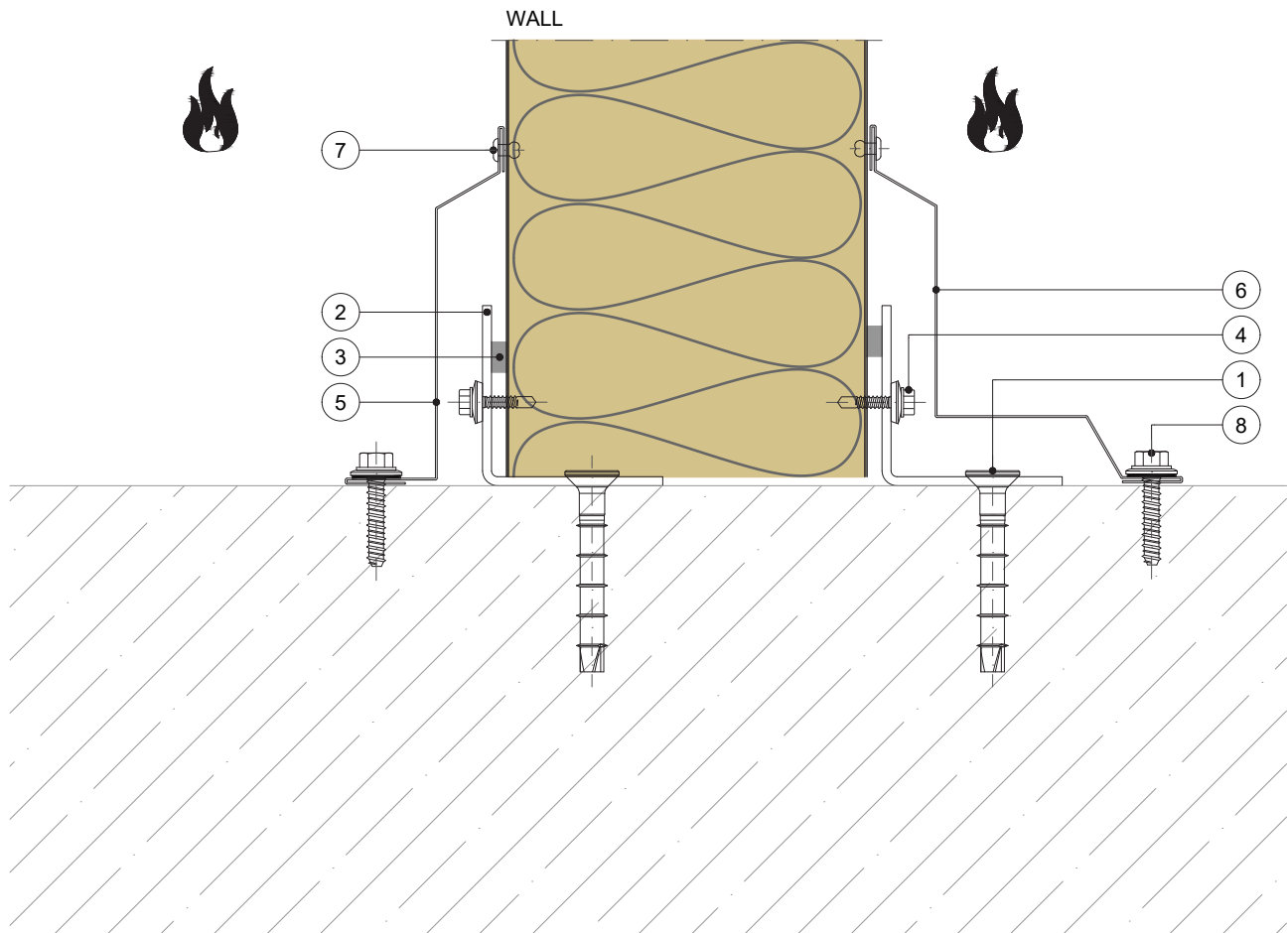
### FUNCTION

- FIRE - fire-resistant system
- FOOGIENE - food & hygiene system
- BASE - backing-wall system

### APPLICATION

- External Facade
- Internal Wall
- Flat Roof
- + External Soffit
- + Internal Ceiling
- Pitched Roof

### VERTICAL CUT



POS.	ELEMENTS	SCALE: M 1:2.5
1	Metal fixing anchor (depending on material)	
2	Support profile (recommended thickness minimal 2mm)	
3	Sealing tape	
4	Fixing screw short	
5	Flashing (optional)	
6	Flashing (optional)	
7	Blind rivet	
8	Metal fixing screw (depending on material)	

## BASE

Trimo Group holds full copyrights on the information and details provided on this media, therefore any unauthorized reproduction and distribution is strictly prohibited.



## VERTICAL INSTALLATION

## TRIMOTERM FTV

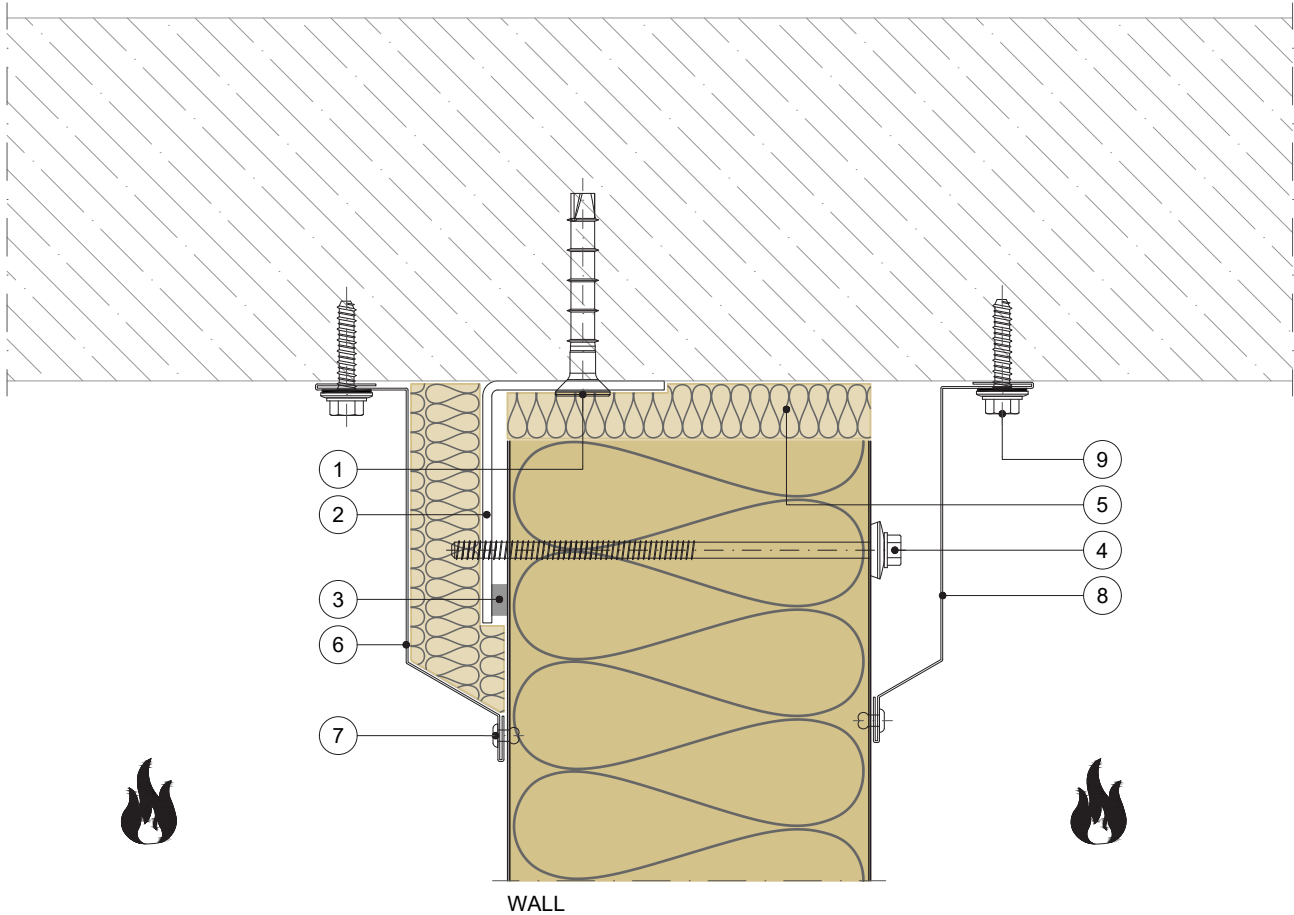
### FUNCTION

- FIRE - fire-resistant system
- FOOGIENE - food & hygiene system
- BASE - backing-wall system

### APPLICATION

- External Facade
- Internal Wall
- Flat Roof
- + External Soffit
- + Internal Ceiling
- Pitched Roof

### VERTICAL CUT



POS.	ELEMENTS	SCALE: M 1:2.5
1	Metal fixing anchor (depending on material)	
2	Support profile (recommended thickness minimal 2mm)	
3	Sealing tape	
4	Fixing screw	
5	Mineral wool minimal density 100kg/m3	
6	Flashing	
7	Blind rivet	
8	Flashing (optional)	
9	Metal fixing screw (depending on material)	



## VERTICAL INSTALLATION

## TRIMOTERM FTV

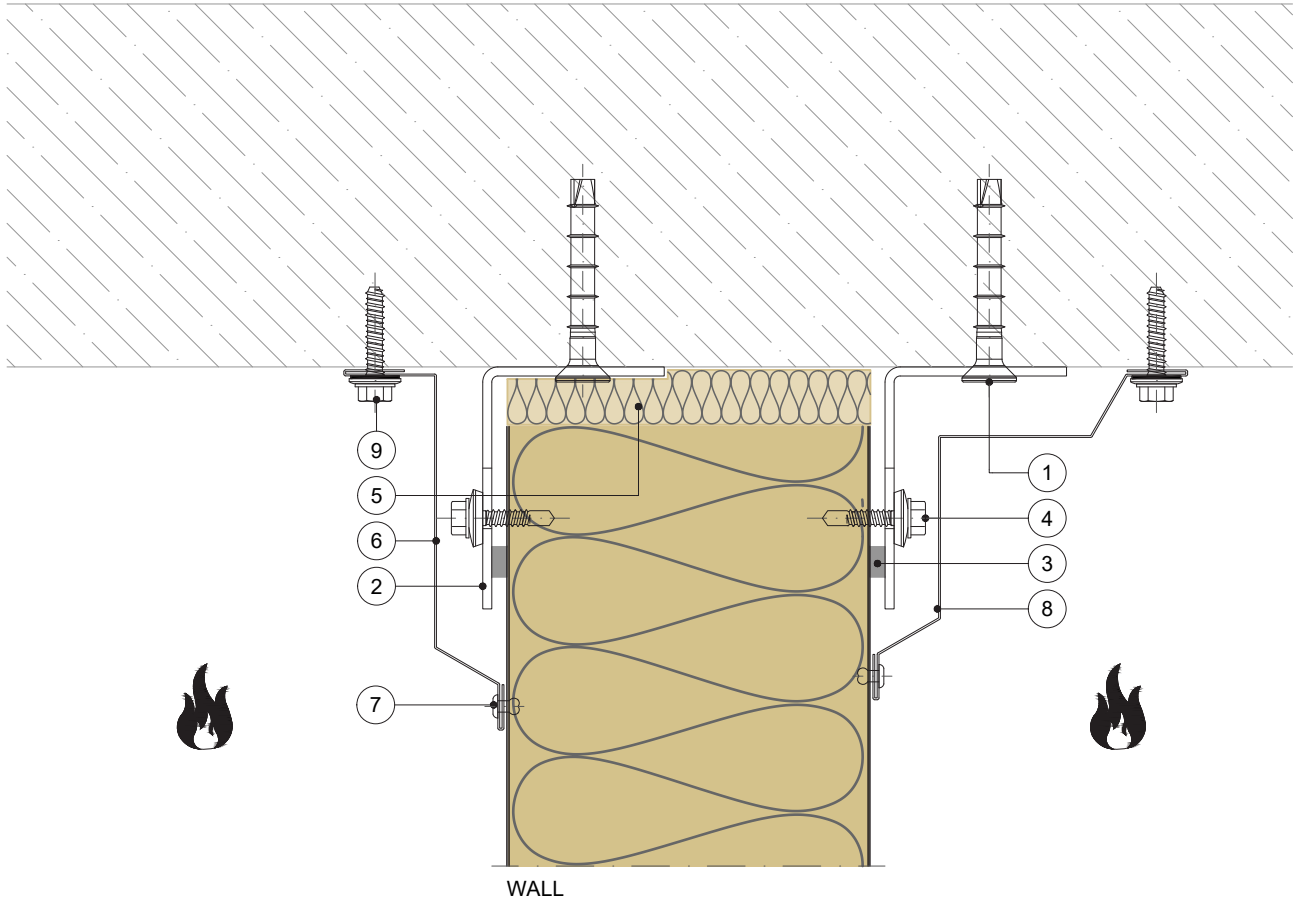
### FUNCTION

- FIRE - fire-resistant system
- FOOGIENE - food & hygiene system
- BASE - backing-wall system

### APPLICATION

- External Facade
- Internal Wall
- Flat Roof
- + External Soffit
- + Internal Ceiling
- Pitched Roof

### VERTICAL CUT



POS.	ELEMENTS	SCALE: M 1:2.5
1	Metal fixing anchor (depending on material)	
2	Support profile with optional slotted hole (recommended thickness minimal 2mm)	
3	Sealing tape	
4	Fixing screw short	
5	Mineral wool minimal density 100kg/m3	
6	Flashing (optional)	
7	Blind rivet	
8	Flashing (optional)	
9	Metal fixing screw (depending on material)	





## VERTICAL INSTALLATION

## TRIMOTERM FTV

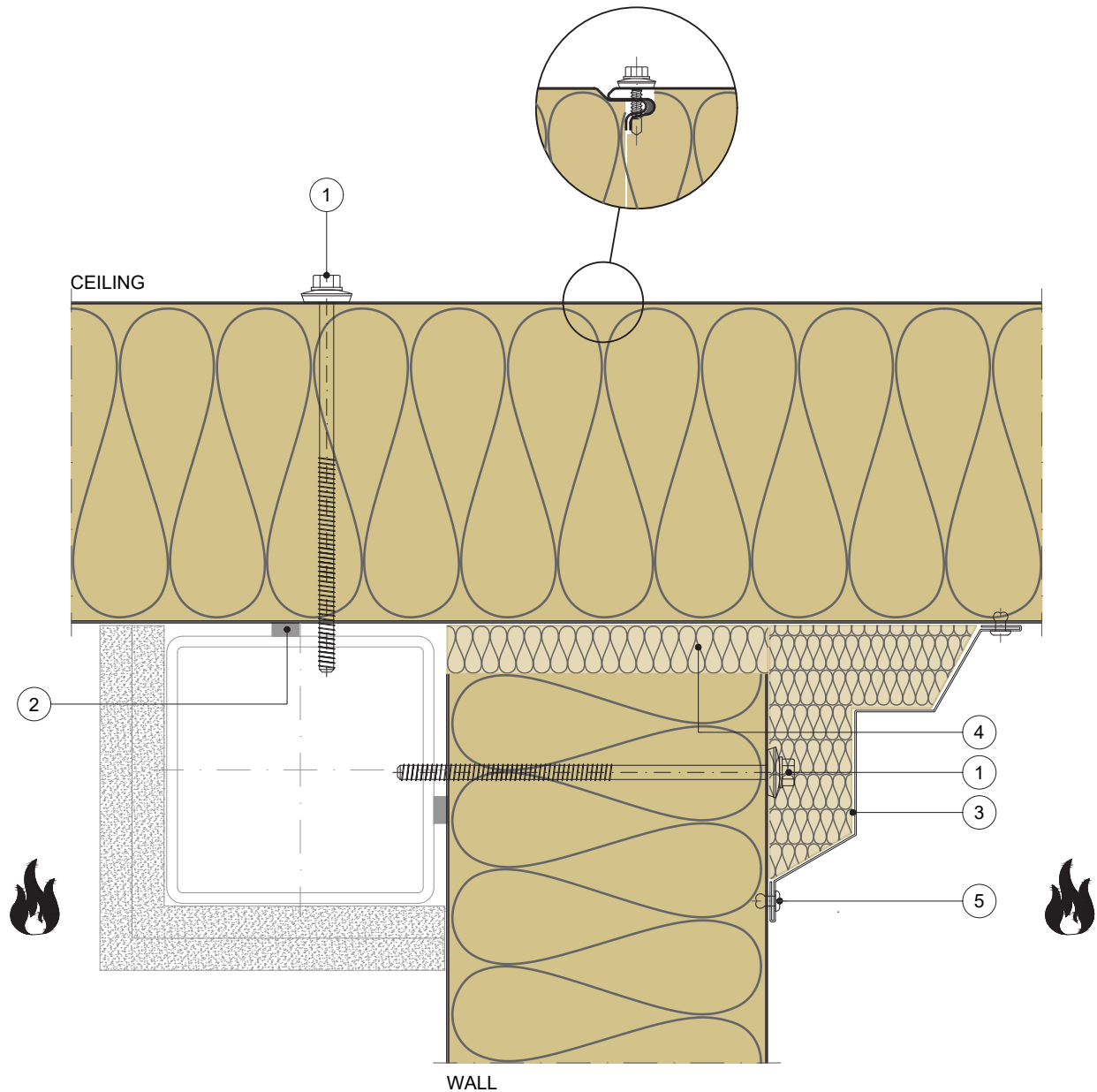
### FUNCTION

- FIRE - fire-resistant system
- FOOGIENE - food & hygiene system
- BASE - backing-wall system

### APPLICATION

- External Facade
- Internal Wall
- Flat Roof
- + External Soffit
- + Internal Ceiling
- Pitched Roof

### VERTICAL CUT



POS.	ELEMENTS	SCALE: M 1:2.5
1	Fixing screw	
2	Sealing tape	
3	Flashing	
4	Mineral wool minimal density 100kg/m3	
5	Blind rivet	

## PARAPET

Trimo Group holds full copyrights on the information and details provided on this media, therefore any unauthorized reproduction and distribution is strictly prohibited.



## VERTICAL INSTALLATION

## TRIMOTERM FTV

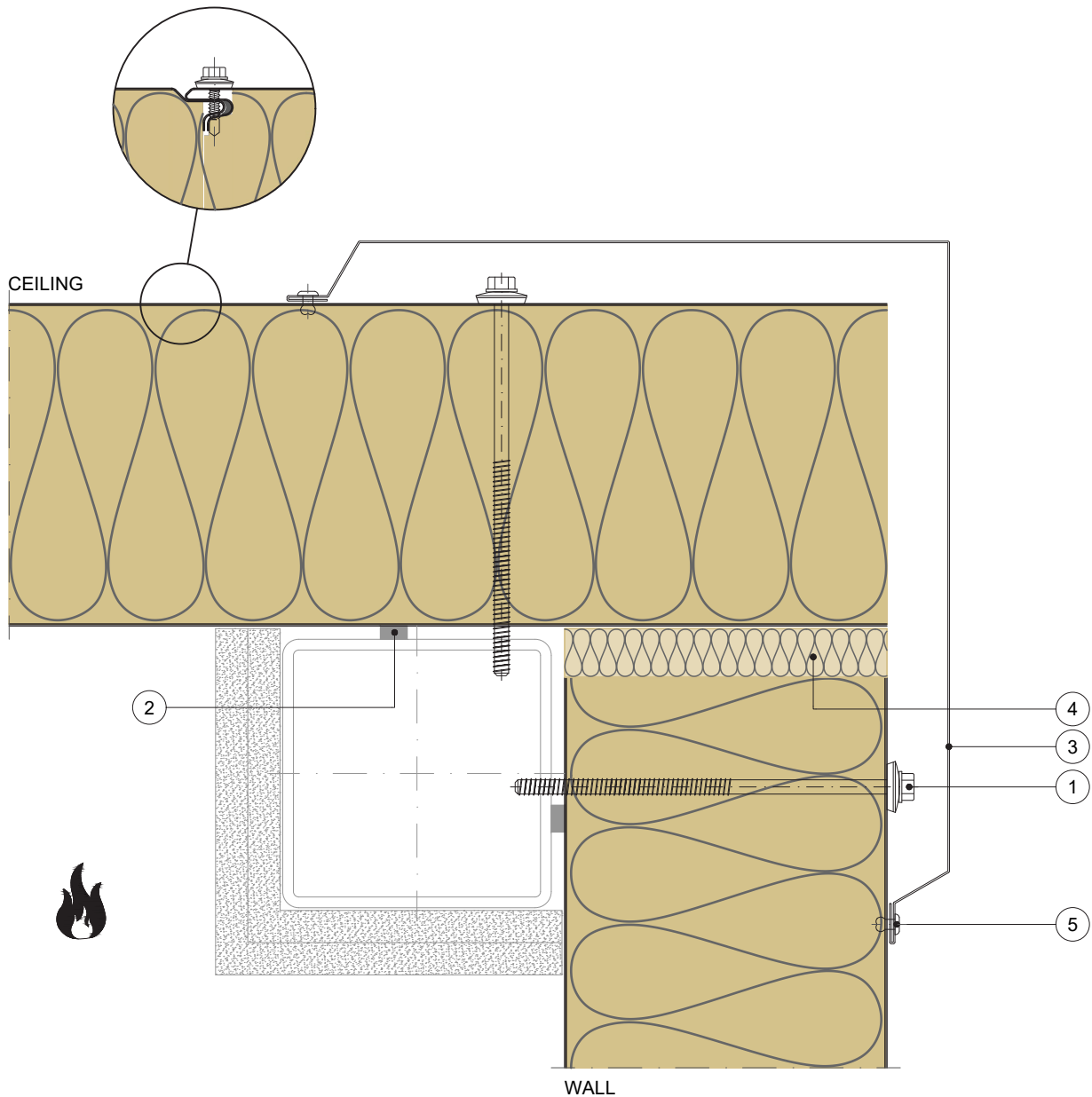
### FUNCTION

- FIRE - fire-resistant system
- FOOGIENE - food & hygiene system
- BASE - backing-wall system

### APPLICATION

- External Facade
- Internal Wall
- Flat Roof
- + External Soffit
- + Internal Ceiling
- Pitched Roof

### VERTICAL CUT



POS.	ELEMENTS	SCALE: M 1:2.5
1	Fixing screw	
2	Sealing tape	
3	Flashing	
4	Mineral wool minimal density 100kg/m3	
5	Blind rivet	

## PARAPET

Trimo Group holds full copyrights on the information and details provided on this media, therefore any unauthorized reproduction and distribution is strictly prohibited.



## VERTICAL INSTALLATION

## TRIMOTERM FTV

### FUNCTION

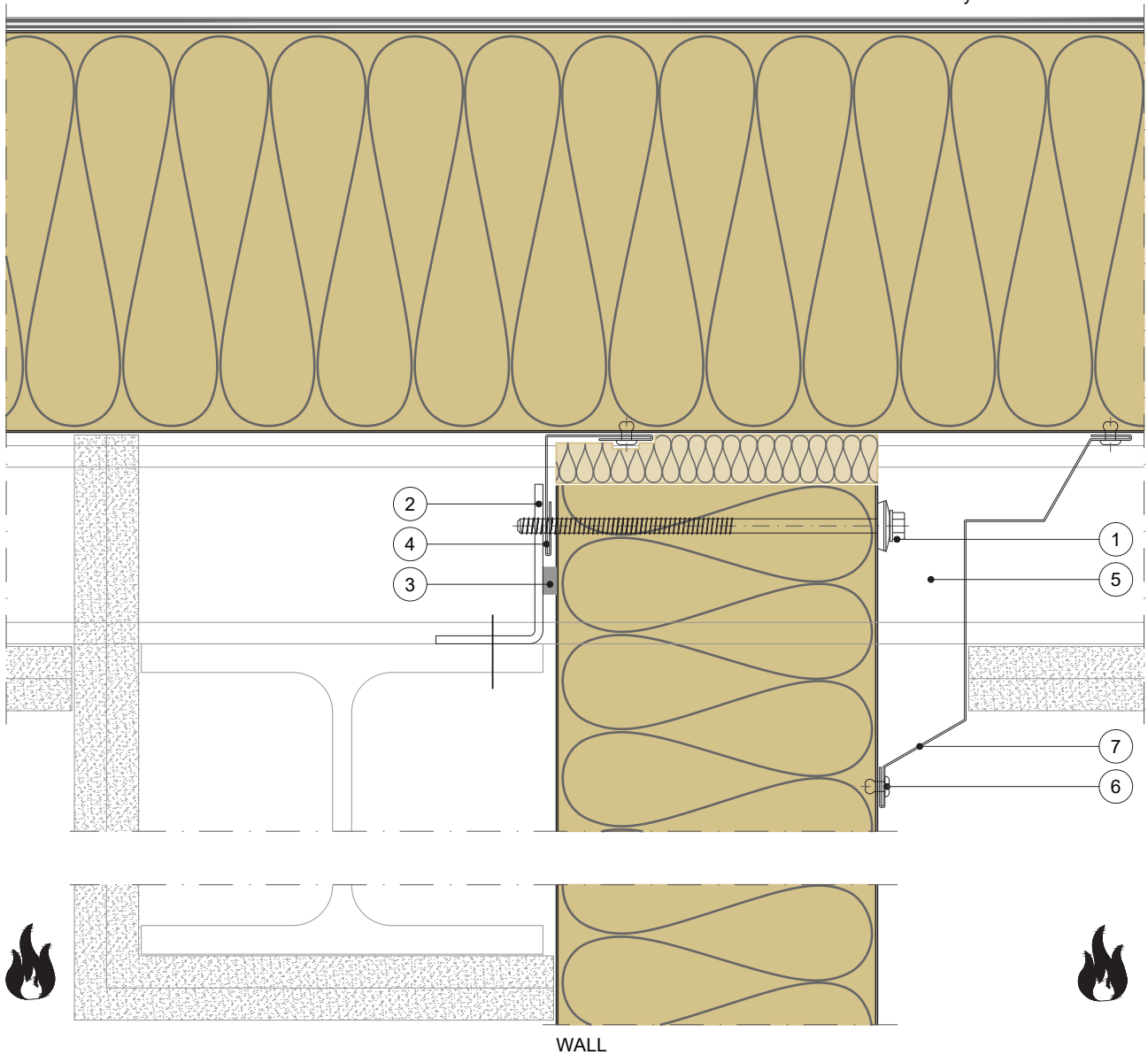
- FIRE - fire-resistant system
- FOOGIENE - food & hygiene system
- BASE - backing-wall system

### APPLICATION

- External Facade
- Internal Wall
- Flat Roof
- + External Soffit
- + Internal Ceiling
- Pitched Roof

### VERTICAL CUT

Flat roof system Trimoterm FTV



POS.	ELEMENTS	SCALE: M 1:2.5
1	Fixing screw	
2	Support profile (recommended thickness minimal 2mm)	
3	Sealing tape	
4	Flashing	
5	Mineral wool minimal density 100kg/m3	
6	Blind rivet	
7	Flashing	

## PARAPET

Trimo Group holds full copyrights on the information and details provided on this media, therefore any unauthorized reproduction and distribution is strictly prohibited.



## VERTICAL INSTALLATION

## TRIMOTERM FTV

### FUNCTION

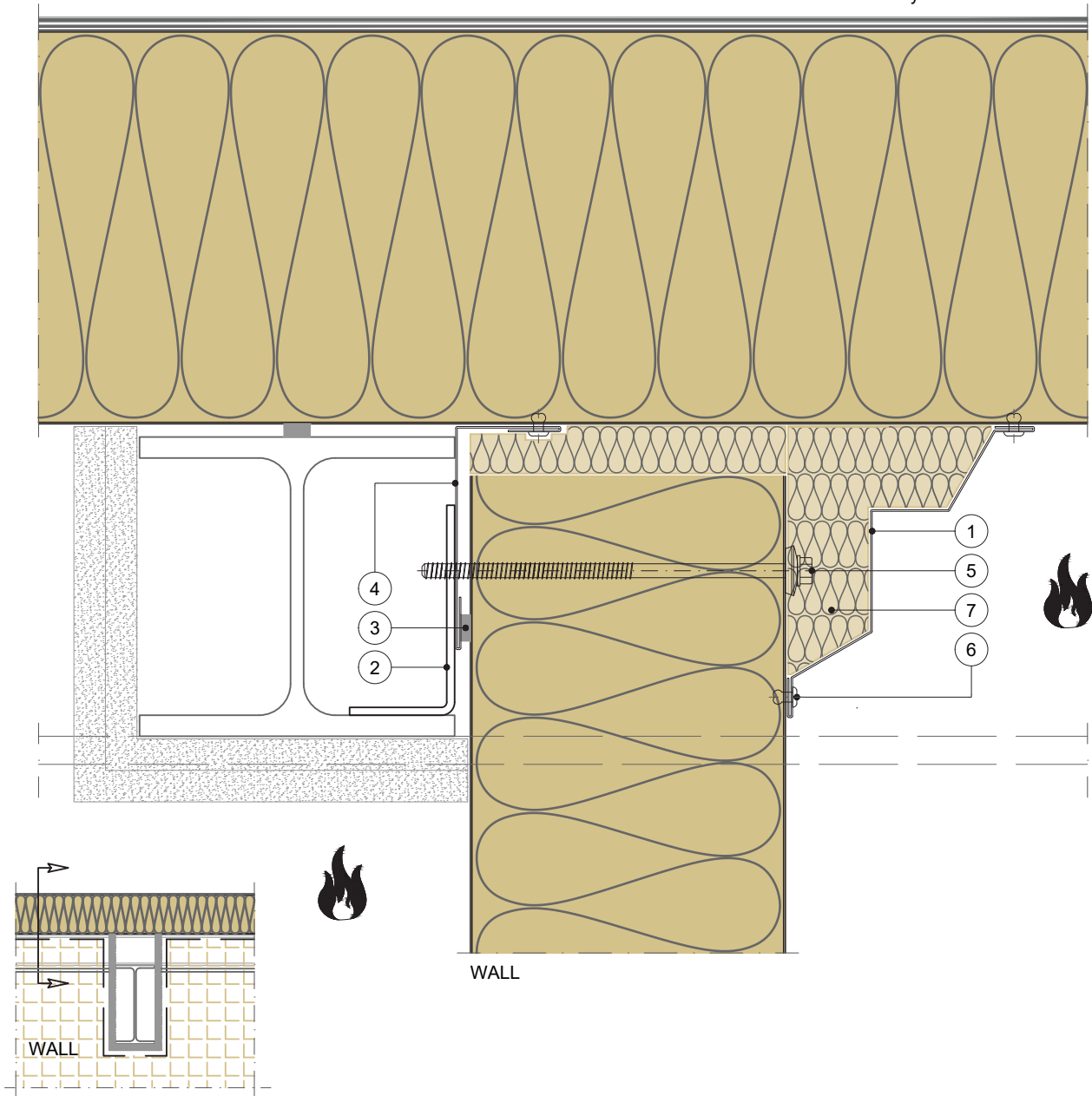
- FIRE - fire-resistant system
- FOOGIENE - food & hygiene system
- BASE - backing-wall system

### APPLICATION

- External Facade
- Internal Wall
- Flat Roof
- + External Soffit
- + Internal Ceiling
- Pitched Roof

### VERTICAL CUT

Flat roof system Trimoterm FTV



POS.	ELEMENTS	SCALE: M 1:2.5
1	Fixing screw	
2	Support profile (recommended thickness minimal 2mm)	
3	Sealing tape	
4	Flashing	
5	Mineral wool minimal density 100kg/m3	
6	Blind rivet	
7	Flashing	

## PARAPET

Trimo Group holds full copyrights on the information and details provided on this media, therefore any unauthorized reproduction and distribution is strictly prohibited.



## VERTICAL INSTALLATION

## TRIMOTERM FTV

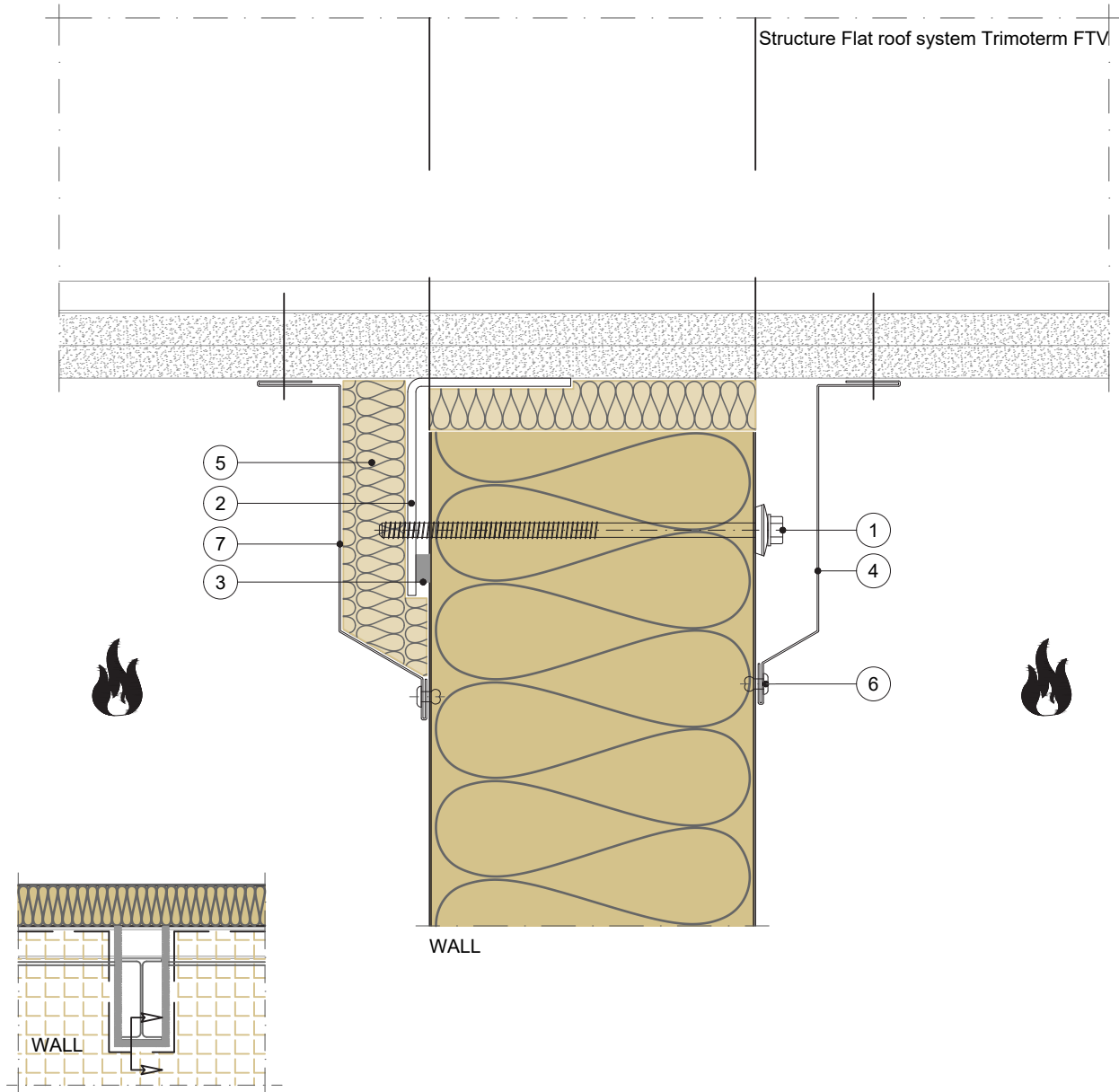
### FUNCTION

- FIRE - fire-resistant system
- FOOGIENE - food & hygiene system
- BASE - backing-wall system

### APPLICATION

- External Facade
- Internal Wall
- Flat Roof
- + External Soffit
- + Internal Ceiling
- Pitched Roof

### VERTICAL CUT



POS.	ELEMENTS	SCALE: M 1:2.5
1	Fixing screw	
2	Support profile (recommended thickness minimal 2mm)	
3	Sealing tape	
4	Flashing (optional)	
5	Mineral wool minimal density 100kg/m3	
6	Blind rivet	
7	Flashing	

## PARAPET

Trimo Group holds full copyrights on the information and details provided on this media, therefore any unauthorized reproduction and distribution is strictly prohibited.



## VERTICAL INSTALLATION

## TRIMOTERM FTV

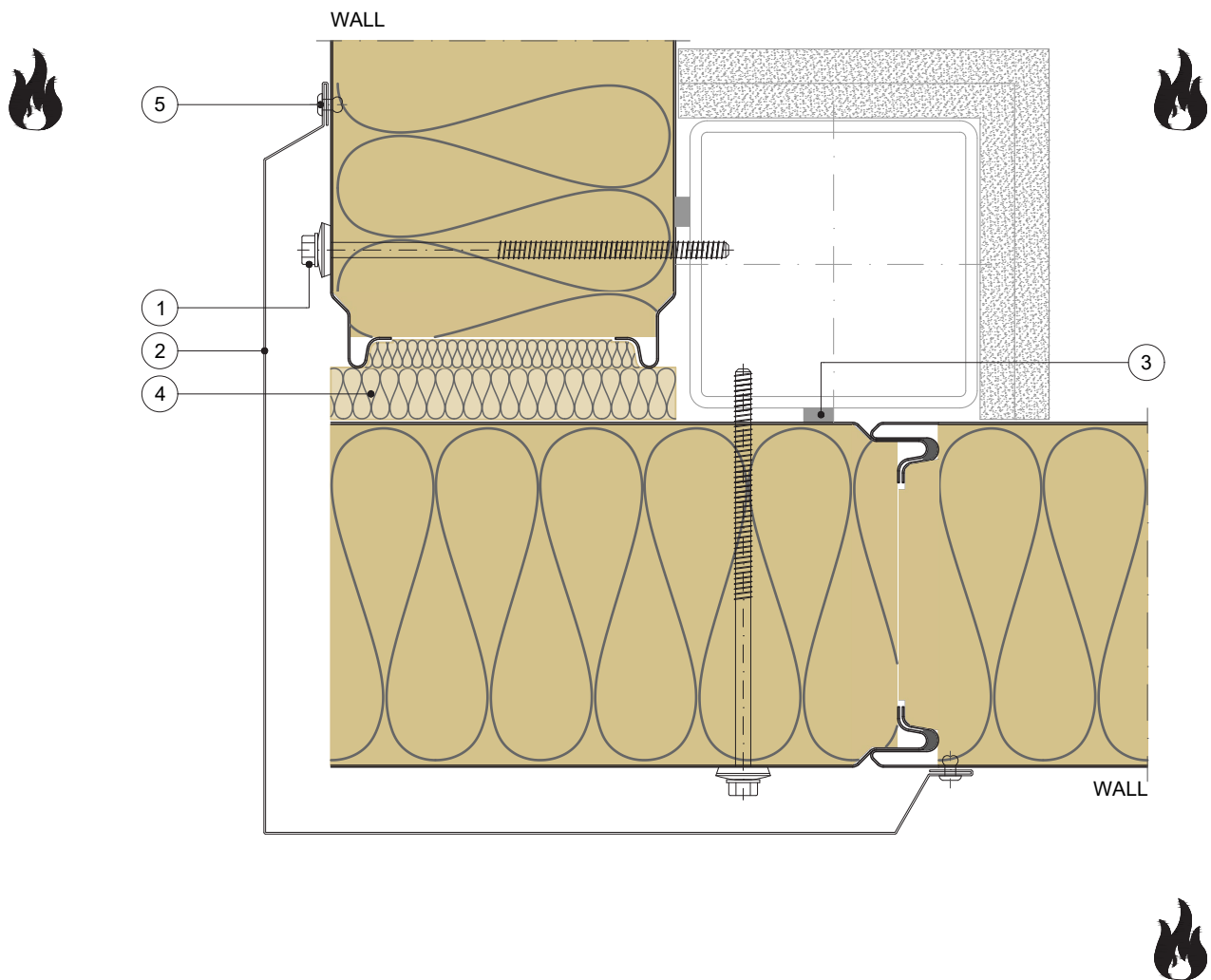
### FUNCTION

- FIRE - fire-resistant system
- FOOGIENE - food & hygiene system
- BASE - backing-wall system

### APPLICATION

- External Facade
- Internal Wall
- Flat Roof
- + External Soffit
- + Internal Ceiling
- Pitched Roof

### HORIZONTAL CUT



POS.	ELEMENTS	SCALE: M 1:2.5
1	Fixing screw	
2	Sealing tape	
3	Flashing	
4	Mineral wool minimal density 100kg/m3	
5	Blind rivet	

## EXTERNAL CORNER

Trimo Group holds full copyrights on the information and details provided on this media, therefore any unauthorized reproduction and distribution is strictly prohibited.



## VERTICAL INSTALLATION

## TRIMOTERM FTV

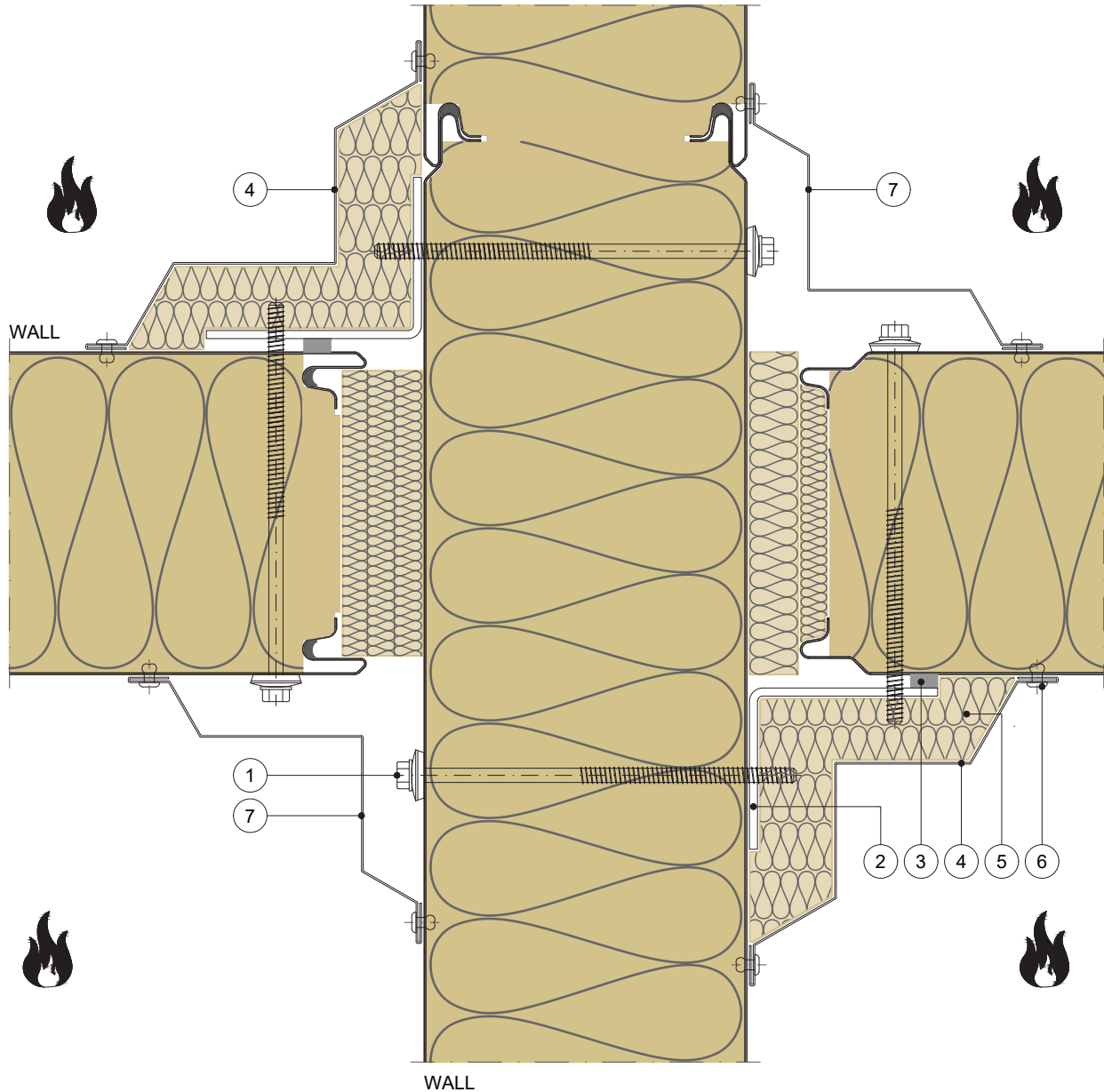
### FUNCTION

- FIRE - fire-resistant system
- FOOGIENE - food & hygiene system
- BASE - backing-wall system

### APPLICATION

- External Facade
- Internal Wall
- Flat Roof
- + External Soffit
- + Internal Ceiling
- Pitched Roof

### HORIZONTAL CUT



POS.	ELEMENTS	SCALE: M 1:2.5
1	Fixing screw	
2	Support profile (recommended thickness minimal 2mm)	
3	Sealing tape	
4	Flashing	
5	Mineral wool minimal density 100kg/m3	
6	Blind rivet	
7	Flashing (optional)	

## INTERNAL CORNER

Trimo Group holds full copyrights on the information and details provided on this media, therefore any unauthorized reproduction and distribution is strictly prohibited.





## VERTICAL INSTALLATION

## TRIMOTERM FTV

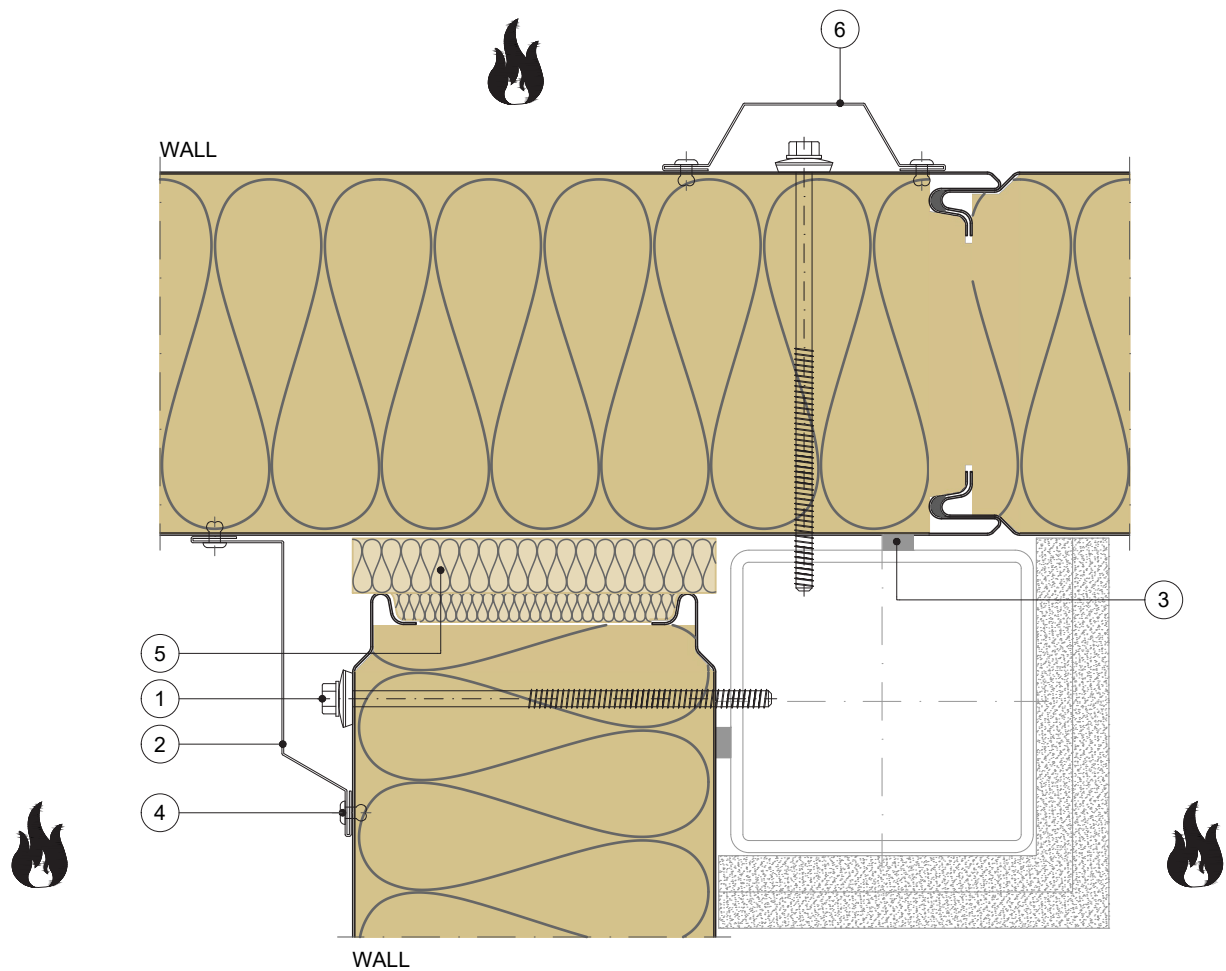
### FUNCTION

- FIRE - fire-resistant system
- FOOGIENE - food & hygiene system
- BASE - backing-wall system

### APPLICATION

- External Facade
- Internal Wall
- Flat Roof
- + External Soffit
- + Internal Ceiling
- Pitched Roof

### HORIZONTAL CUT



POS.	ELEMENTS	SCALE: M 1:2.5
1	Fixing screw	
2	Flashing (optional)	
3	Sealing tape	
4	Blind rivet	
5	Mineral wool minimal density 100kg/m3	
6	Flashing (optional)	

## INTERNAL CORNER

Trimo Group holds full copyrights on the information and details provided on this media, therefore any unauthorized reproduction and distribution is strictly prohibited.



## VERTICAL INSTALLATION

## TRIMOTERM FTV

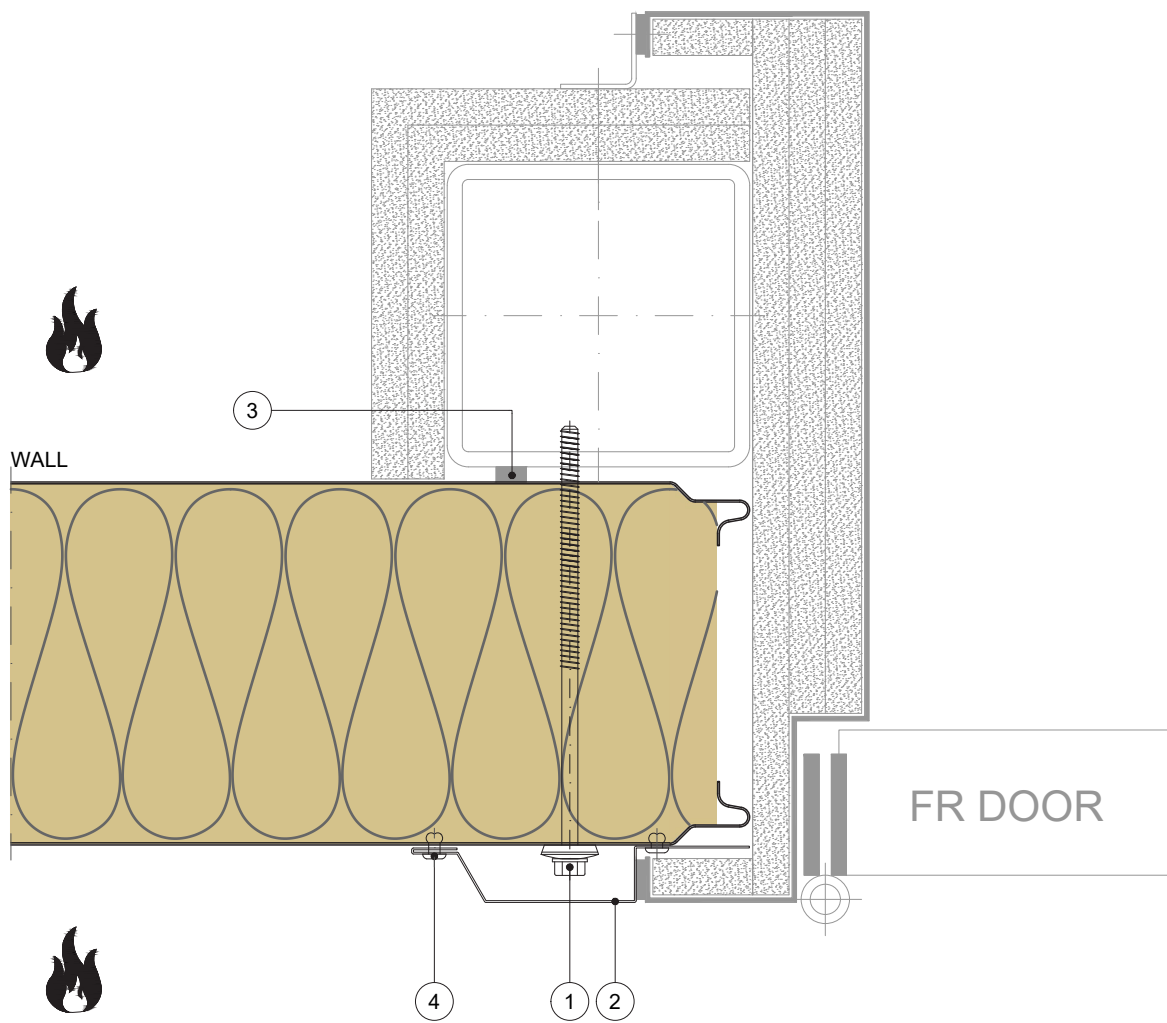
### FUNCTION

- FIRE - fire-resistant system
- FOOGIENE - food & hygiene system
- BASE - backing-wall system

### APPLICATION

- External Facade
- Internal Wall
- Flat Roof
- + External Soffit
- + Internal Ceiling
- Pitched Roof

### HORIZONTAL CUT



POS.	ELEMENTS	SCALE: M 1:2.5
1	Fixing screw	
2	Flashing (optional)	
3	Sealing tape	
4	Blind rivet	

## DOOR

Trimo Group holds full copyrights on the information and details provided on this media, therefore any unauthorized reproduction and distribution is strictly prohibited.



## VERTICAL INSTALLATION

## TRIMOTERM FTV

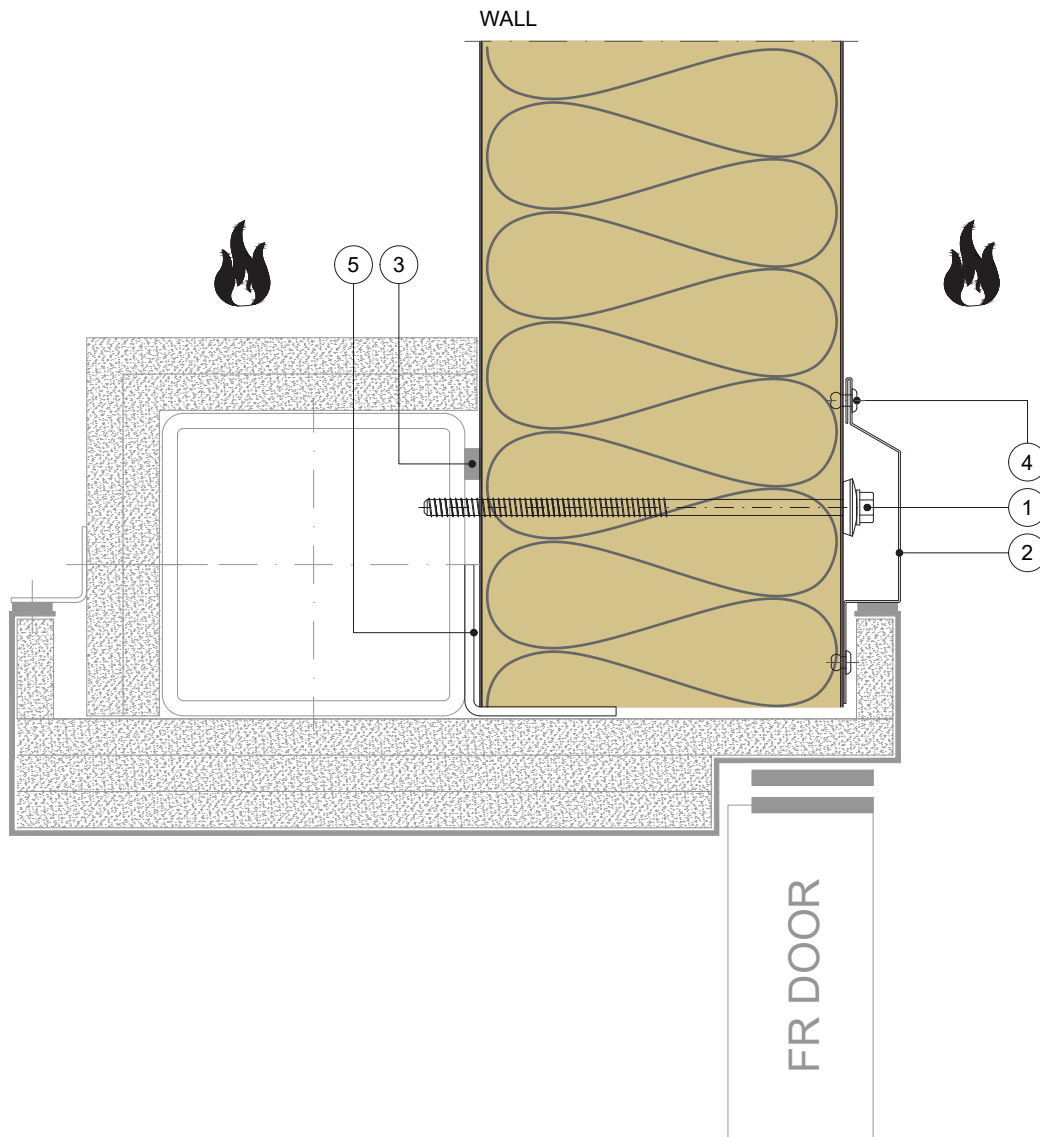
### FUNCTION

- FIRE - fire-resistant system
- FOOGIENE - food & hygiene system
- BASE - backing-wall system

### APPLICATION

- External Facade
- Internal Wall
- Flat Roof
- + External Soffit
- + Internal Ceiling
- Pitched Roof

### VERTICAL CUT



POS.	ELEMENTS	SCALE: M 1:2.5
1	Fixing screw	
2	Flashing (optional)	
3	Sealing tape	
4	Blind rivet	
5	Support profile (recommended thickness minimal 2mm)	

## DOOR

Trimo Group holds full copyrights on the information and details provided on this media, therefore any unauthorized reproduction and distribution is strictly prohibited.



## VERTICAL INSTALLATION

## TRIMOTERM FTV

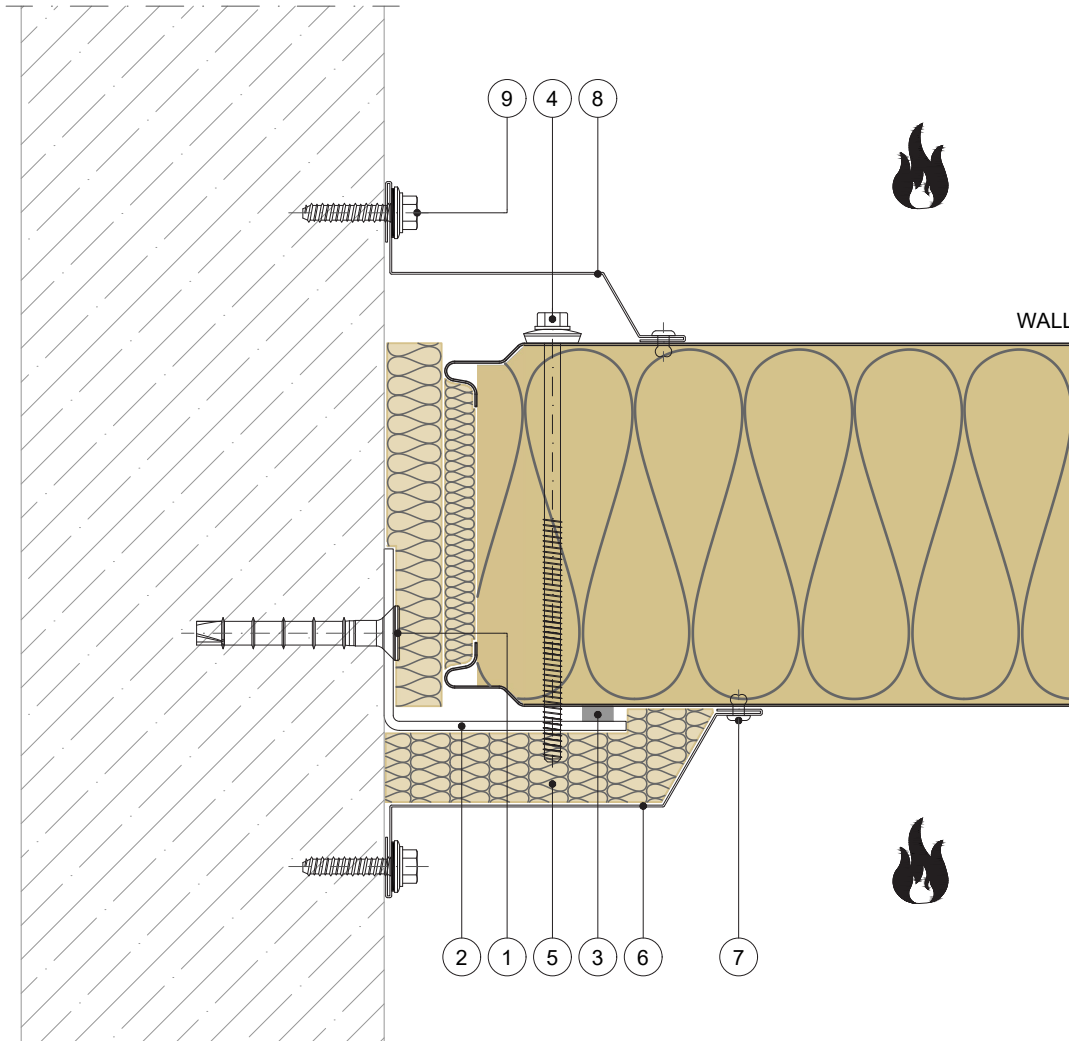
### FUNCTION

- FIRE - fire-resistant system
- FOOGIENE - food & hygiene system
- BASE - backing-wall system

### APPLICATION

- External Facade
- Internal Wall
- Flat Roof
- + External Soffit
- + Internal Ceiling
- Pitched Roof

### HORIZONTAL CUT



POS.	ELEMENTS	SCALE: M 1:2.5
1	Metal fixing anchor (depending on material)	
2	Support profile (recommended thickness minimal 2mm)	
3	Sealing tape	
4	Fixing screw	
5	Mineral wool minimal density 100kg/m3	
6	Flashing	
7	Blind rivet	
8	Flashing (optional)	
9	Metal fixing screw (depending on material)	

## OTHER SYSTEM CONNECTION

Trimo Group holds full copyrights on the information and details provided on this media, therefore any unauthorized reproduction and distribution is strictly prohibited.



## VERTICAL INSTALLATION

## TRIMOTERM FTV

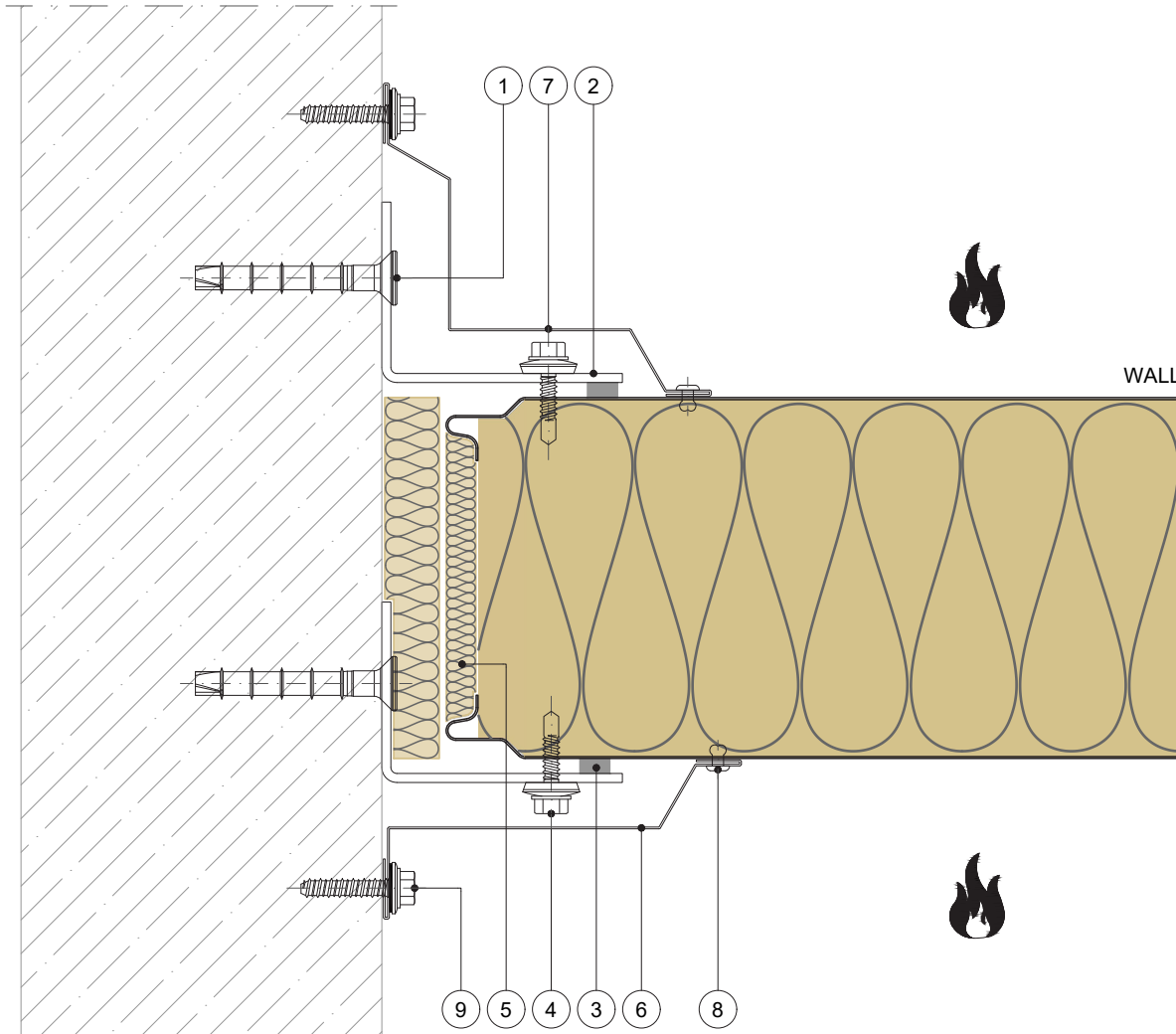
### FUNCTION

- FIRE - fire-resistant system
- FOOGIENE - food & hygiene system
- BASE - backing-wall system

### APPLICATION

- External Facade
- Internal Wall
- Flat Roof
- + External Soffit
- + Internal Ceiling
- Pitched Roof

### HORIZONTAL CUT



POS.	ELEMENTS
1	Metal fixing anchor (depending on material)
2	Support profile (recommended thickness minimal 2mm)
3	Sealing tape
4	Fixing screw short
5	Mineral wool minimal density 100kg/m3
6	Flashing (optional)
7	Flashing (optional)
8	Blind rivet
9	Metal fixing screw (depending on material)

## OTHER SYSTEM CONNECTION

Trimo Group holds full copyrights on the information and details provided on this media, therefore any unauthorized reproduction and distribution is strictly prohibited.



## VERTICAL INSTALLATION

# TRIMOTERM FTV

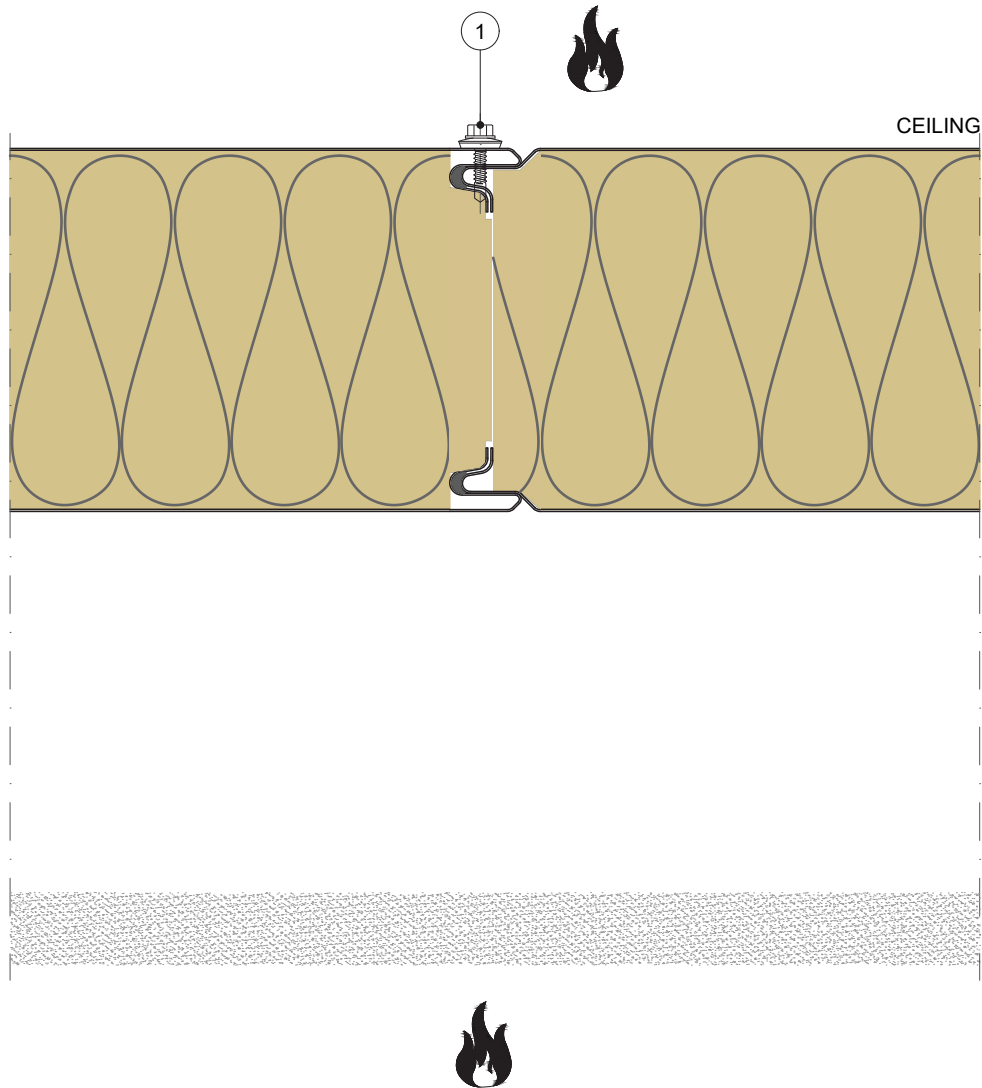
### FUNCTION

- FIRE - fire-resistant system
- FOOGIENE - food & hygiene system
- BASE - backing-wall system

### APPLICATION

- External Facade
- Internal Wall
- Flat Roof
- External Soffit
- Internal Ceiling
- Pitched Roof

## VERTICAL CUT



POS.

ELEMENTS

SCALE: M 1:2.5

1

Stitching screw

## CEILING

Trimo Group holds full copyrights on the information and details provided on this media, therefore any unauthorized reproduction and distribution is strictly prohibited.



## VERTICAL INSTALLATION

## TRIMOTERM FTV

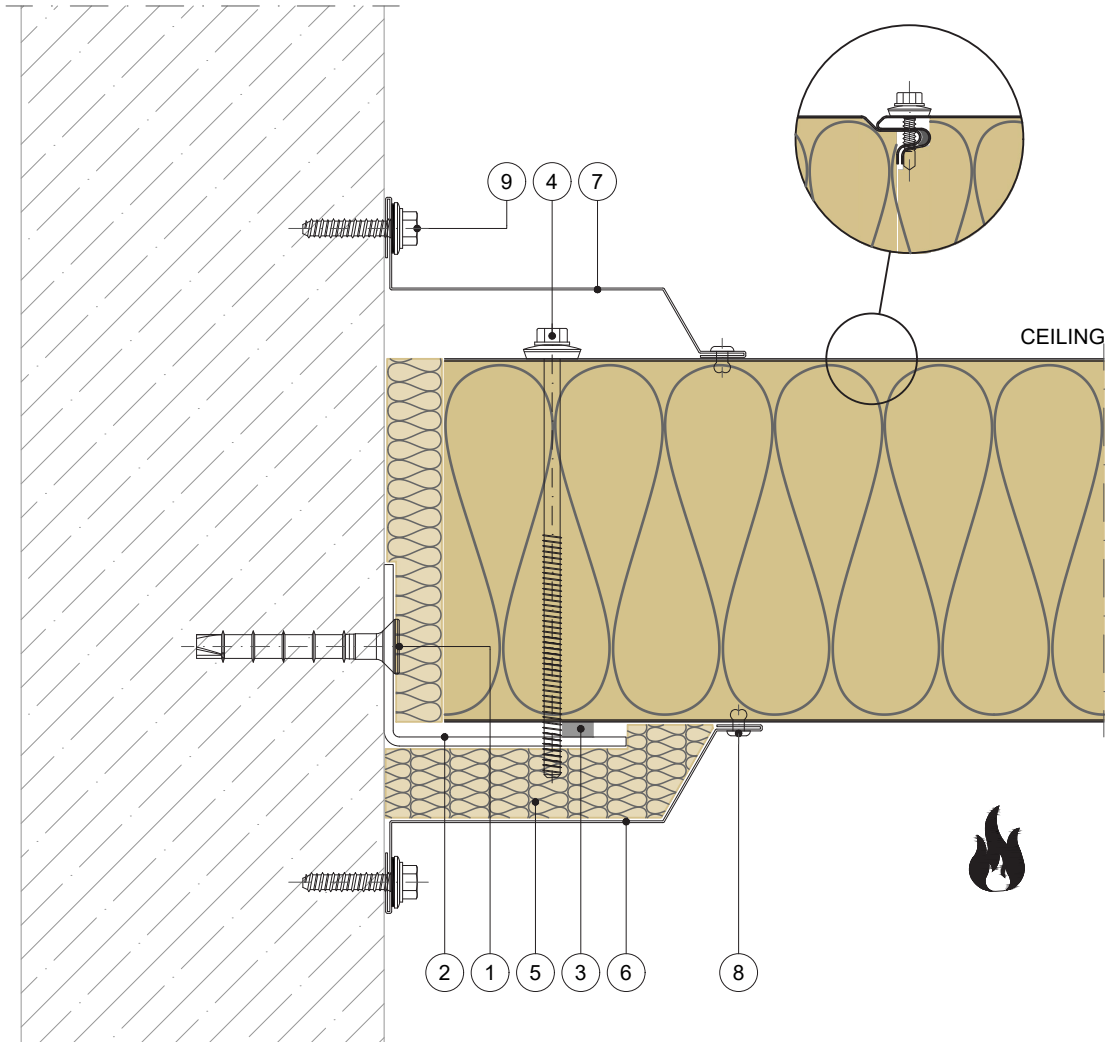
### FUNCTION

- FIRE - fire-resistant system
- FOOGIENE - food & hygiene system
- BASE - backing-wall system

### APPLICATION

- External Facade
- Internal Wall
- Flat Roof
- + External Soffit
- + Internal Ceiling
- Pitched Roof

### VERTICAL CUT



POS.	ELEMENTS	SCALE: M 1:2.5
1	Metal fixing anchor (depending on material)	
2	Support profile (recommended thickness minimal 2mm)	
3	Sealing tape	
4	Fixing screw	
5	Mineral wool minimal density 100kg/m3	
6	Flashing	
7	Flashing (optional)	
8	Blind rivet	
9	Metal fixing screw (depending on material)	

## CEILING

Trimo Group holds full copyrights on the information and details provided on this media, therefore any unauthorized reproduction and distribution is strictly prohibited.



## VERTICAL INSTALLATION

## TRIMOTERM FTV

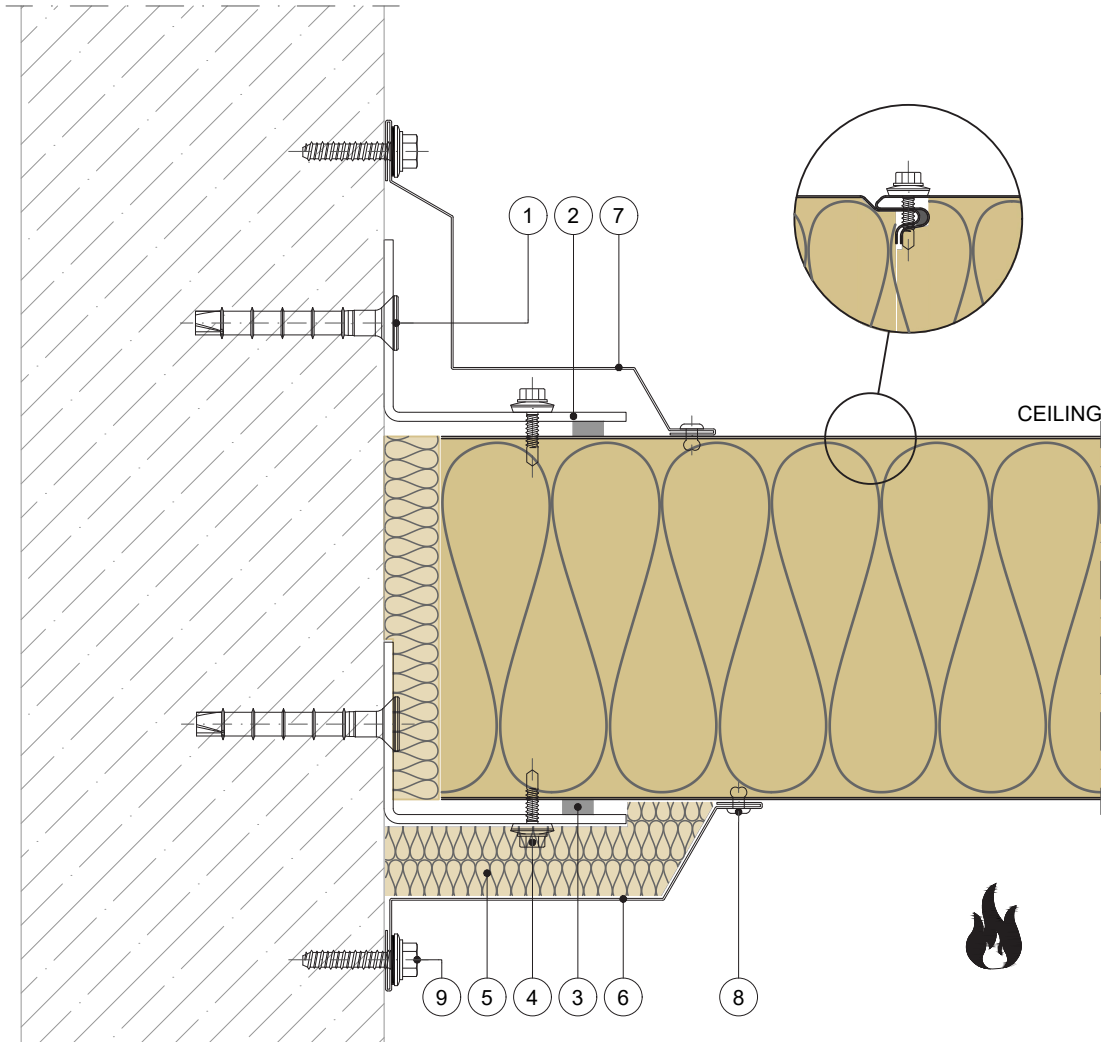
### FUNCTION

- FIRE - fire-resistant system
- FOOGIENE - food & hygiene system
- BASE - backing-wall system

### APPLICATION

- External Facade
- Internal Wall
- Flat Roof
- + External Soffit
- + Internal Ceiling
- Pitched Roof

### VERTICAL CUT



POS.	ELEMENTS	SCALE: M 1:2.5
1	Metal fixing anchor (depending on material)	
2	Support profile (recommended thickness minimal 2mm)	
3	Sealing tape	
4	Fixing screw short	
5	Mineral wool minimal density 100kg/m3	
6	Flashing	
7	Flashing (optional)	
8	Blind rivet	
9	Metal fixing screw (depending on material)	

## CEILING

Trimo Group holds full copyrights on the information and details provided on this media, therefore any unauthorized reproduction and distribution is strictly prohibited.





## VERTICAL INSTALLATION

## TRIMOTERM FTV

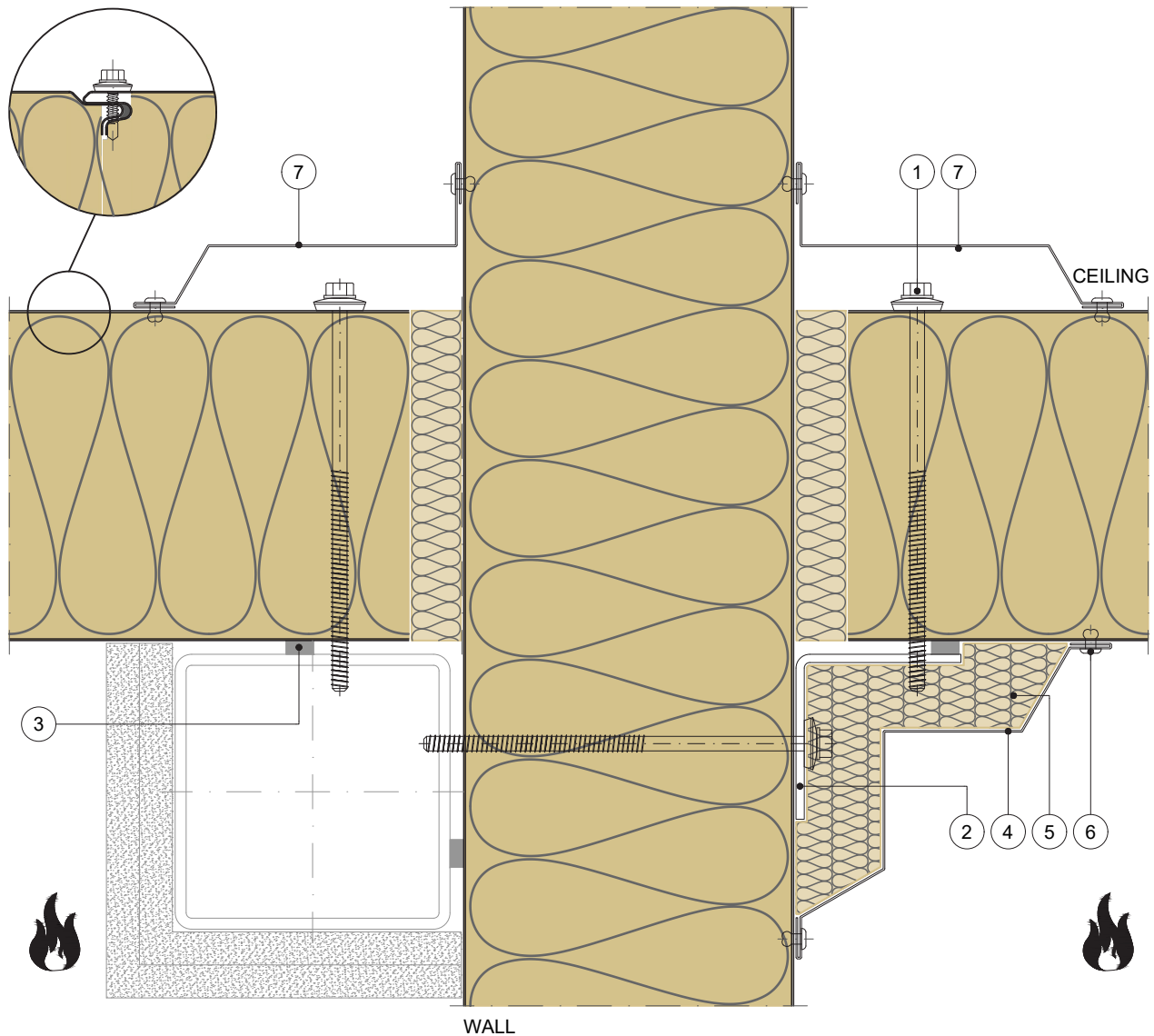
### FUNCTION

- FIRE - fire-resistant system
- FOOGIENE - food & hygiene system
- BASE - backing-wall system

### APPLICATION

- External Facade
- Internal Wall
- Flat Roof
- + External Soffit
- + Internal Ceiling
- Pitched Roof

### VERTICAL CUT



POS.	ELEMENTS	SCALE: M 1:2.5
1	Fixing screw	
2	Support profile (recommended thickness minimal 2mm)	
3	Sealing tape	
4	Flashing	
5	Mineral wool minimal density 100kg/m3	
6	Blind rivet	
7	Flashing (optional)	

## CEILING

Trimo Group holds full copyrights on the information and details provided on this media, therefore any unauthorized reproduction and distribution is strictly prohibited.



# TRIMO

**TRIMO D.O.O.**  
**PRIJATELJEVA CESTA 12**  
**8210 TREBNJE I SLOVENIJA**  
**T: +386 (0)7 34 60 200**  
**F: +386 (0)7 34 60 127**  
**E: TRIMO@TRIMO-GROUP.COM**  
**W: WWW.TRIMO-GROUP.COM**

Trimo Group holds full copyrights on the information and details provided on this media, therefore any unauthorized reproduction and distribution is strictly prohibited. Professional care has been taken to ensure that information/details are accurate, correct, complete and not misleading. However, Trimo (including its subsidiaries) does not accept responsibility or liability for errors or information which is found to be misleading. Information/details on this media are for general purposes only. Use of it is on your own initiative and responsibility for compliance with local laws is yours. Any deviations in details and project solutions are user responsibility. In no event, will Trimo be liable for any loss or damage including without limitation, indirect or consequential loss or damage, or any loss or damage whatsoever arising from loss profits arising out of or in connection with, the use of this media. All information issued by Trimo Group is subject to continuous development and information/details contained on this media are current at date of issue. It is user's responsibility to obtain most up-to-date information from Trimo when information/details are used for project.

The last version of the document is available on [www.trimo-group.com](http://www.trimo-group.com). Latest version of published document in English language prevails over other translated language documents.

For information about the delivery of panels see Trimo's General conditions. <https://trimo-group.com/en/trimo/general-conditions-of-sale>